

Lapwai Creek

Roadside Weed Index



Sweetwater Creek From Flat Iron Road. Yellow Starthistle in foreground.



**Lapwai Creek
Roadside Weed Inventory Index**

October 2007

prepared by:
Dash Dieringer, Field Technician

Nez Perce Soil and Water

Conservation District

P O Box 131

Culdesac, ID 83524

208.843.2931

Acknowledgements

The authors recognize and greatly appreciate the assistance of their colleagues in the production of this document. The authors also recognize and express their gratitude to the field crew members and support staff that spent countless hours in the collection and development of the data used for this document.

Bill Reynolds, GIS Coordinator
Nez Perce County

Kyle Wilson, Board Member, local landowner, economist
Nez Perce Soil and Water Conservation District

Todd Wittman, Board Member and local landowner
Nez Perce Soil and Water Conservation District

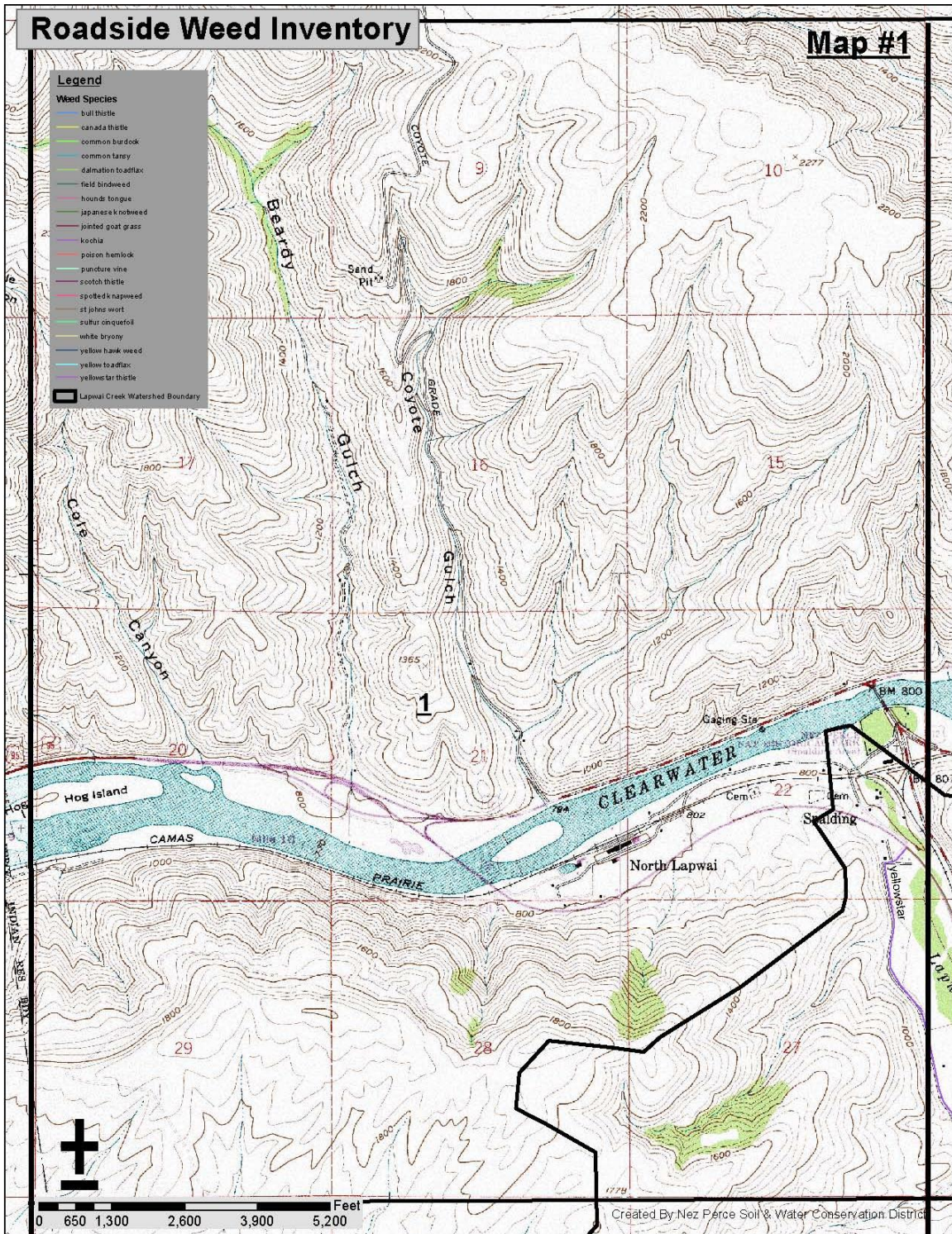
Amanda Schwartz, Project Assistant
Nez Perce Soil and Water Conservation District

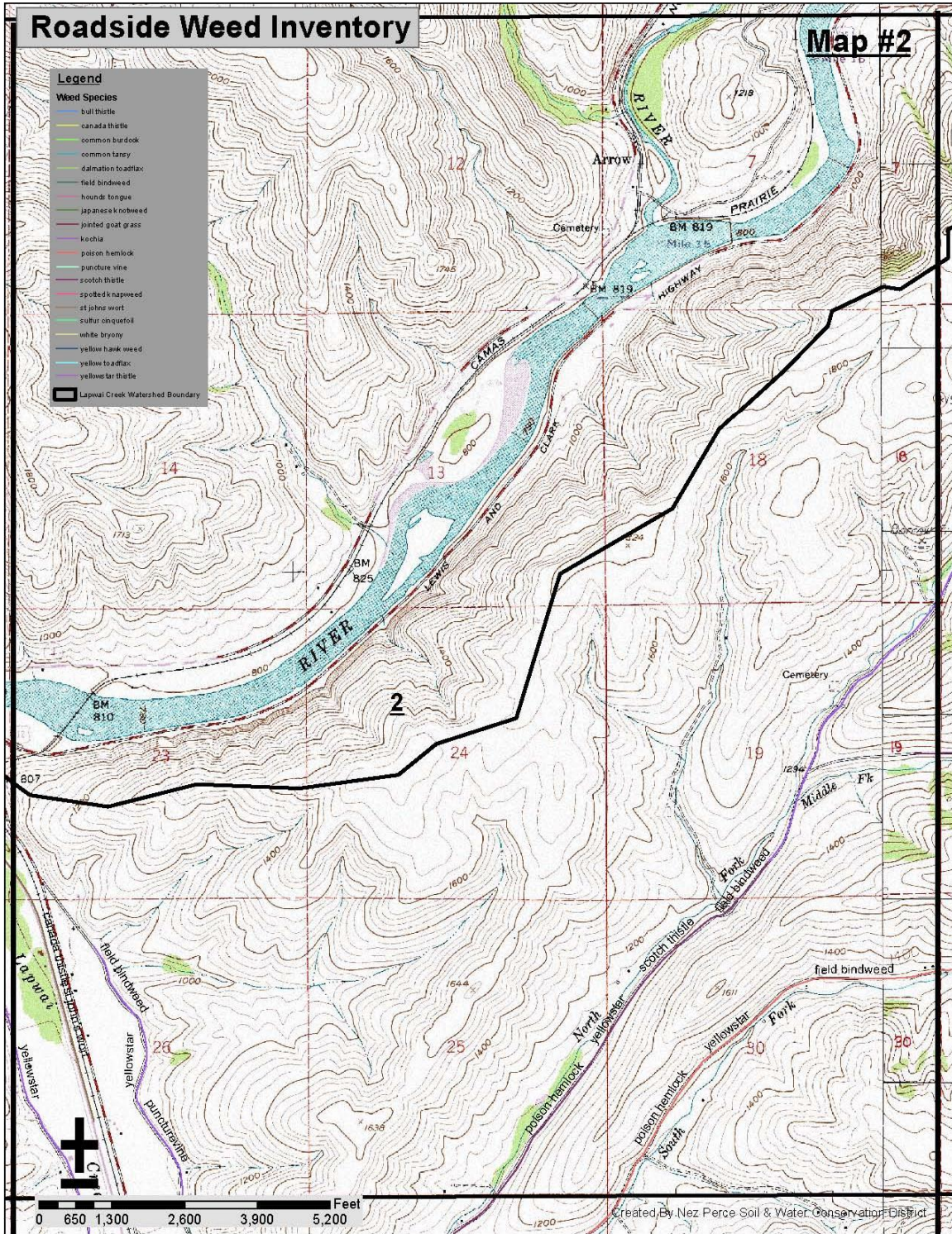
Background

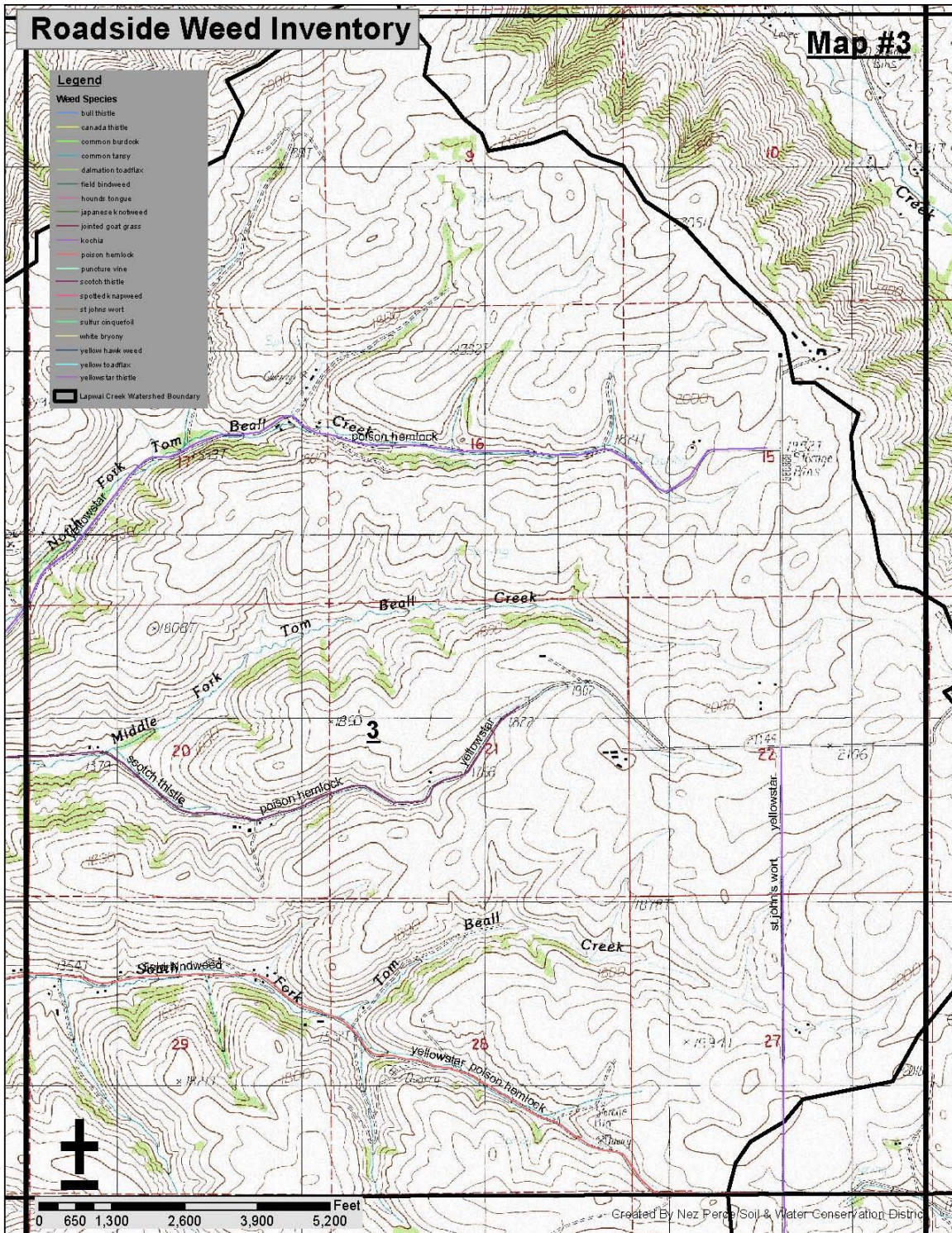
The Nez Perce Soil and Water Conservation District (District) developed this document to provide a map index for conservation planners to use in weed inventory efforts.

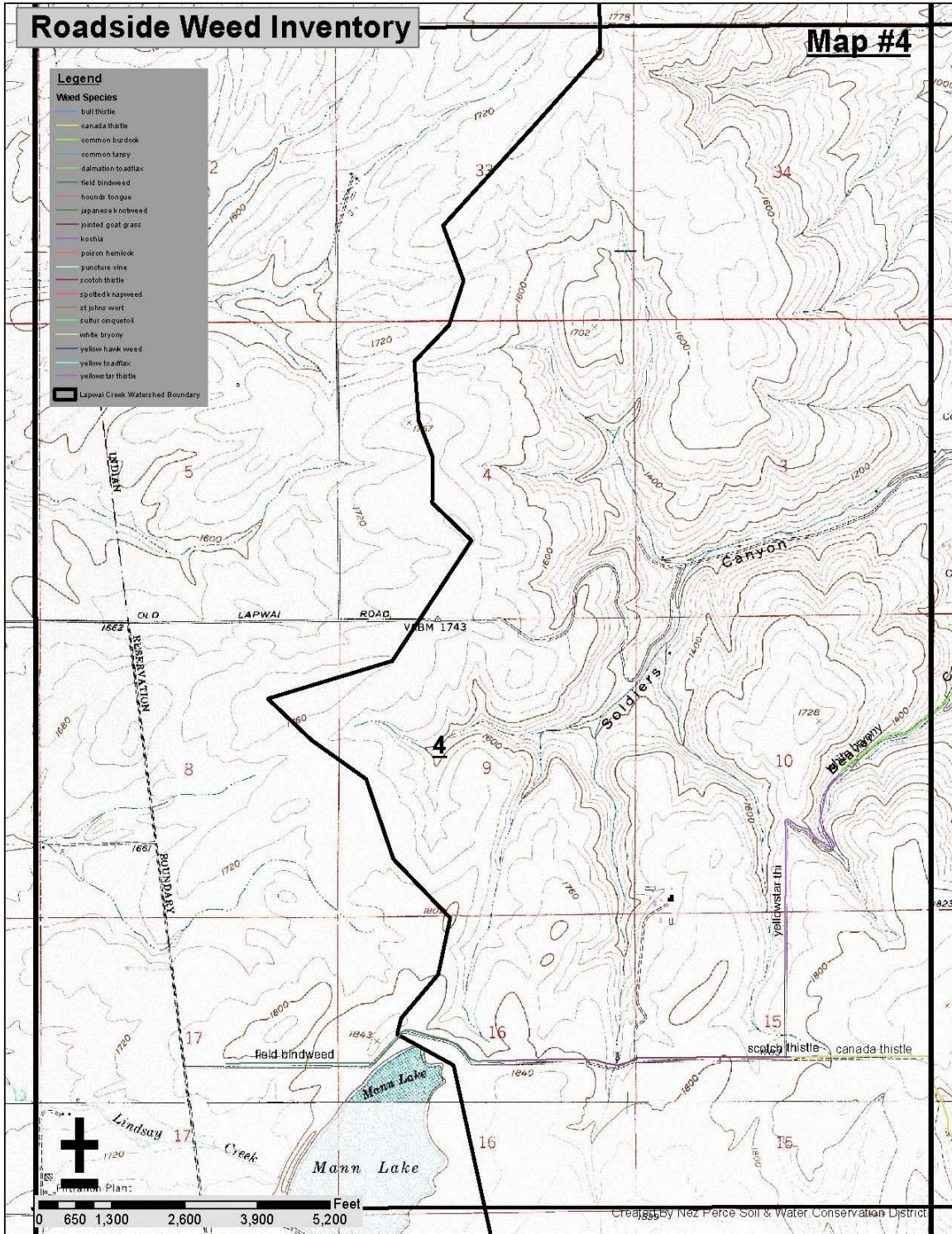
The weed inventory was completed in 2004. All public roads within the watershed were inventoried.

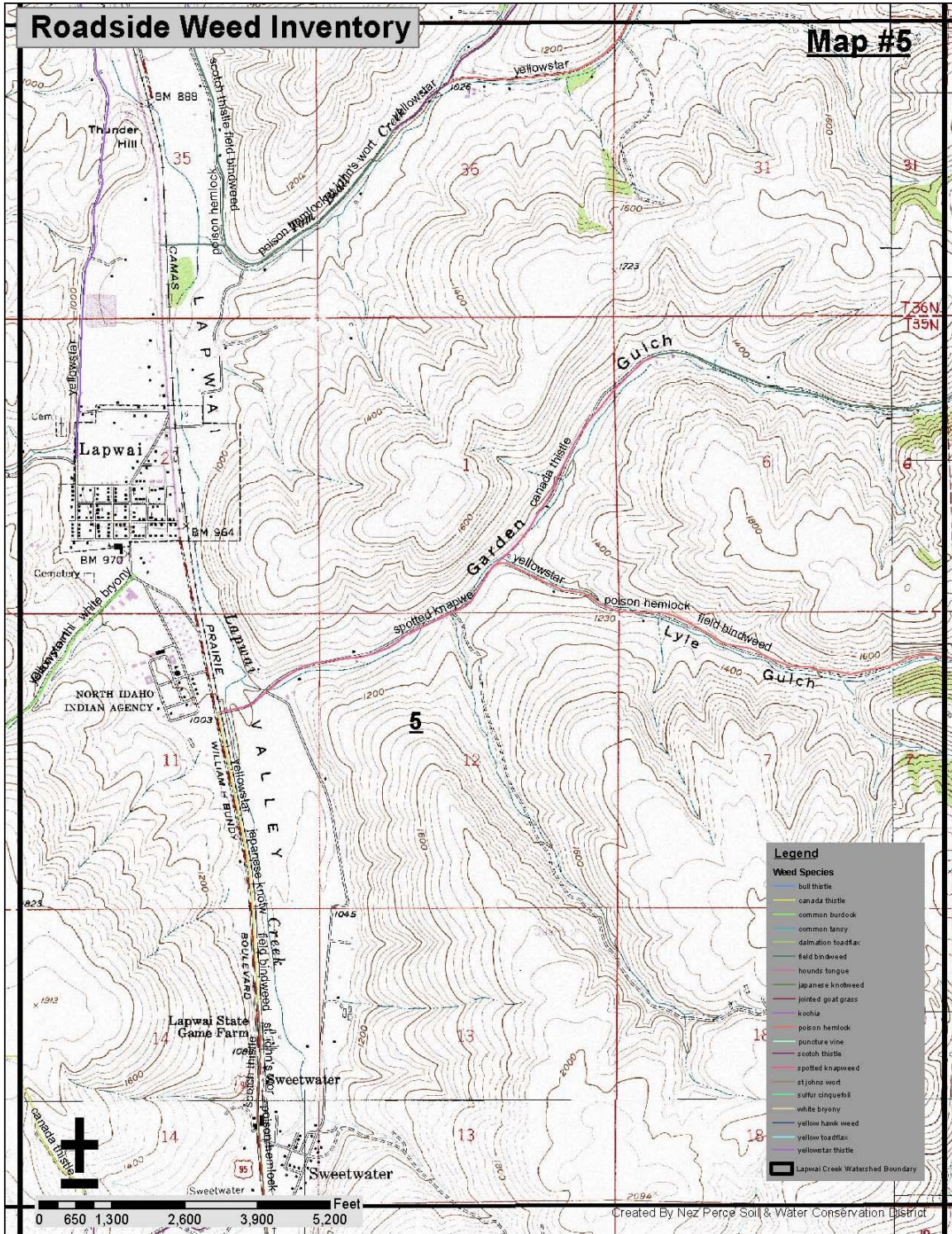
The document is intended to provide a framework for prioritization and coordination of restoration efforts and will be updated as necessary to include additional data and improved scientific methods. These updates will be used to reprioritize activities and coordination of the plan through adaptive management.



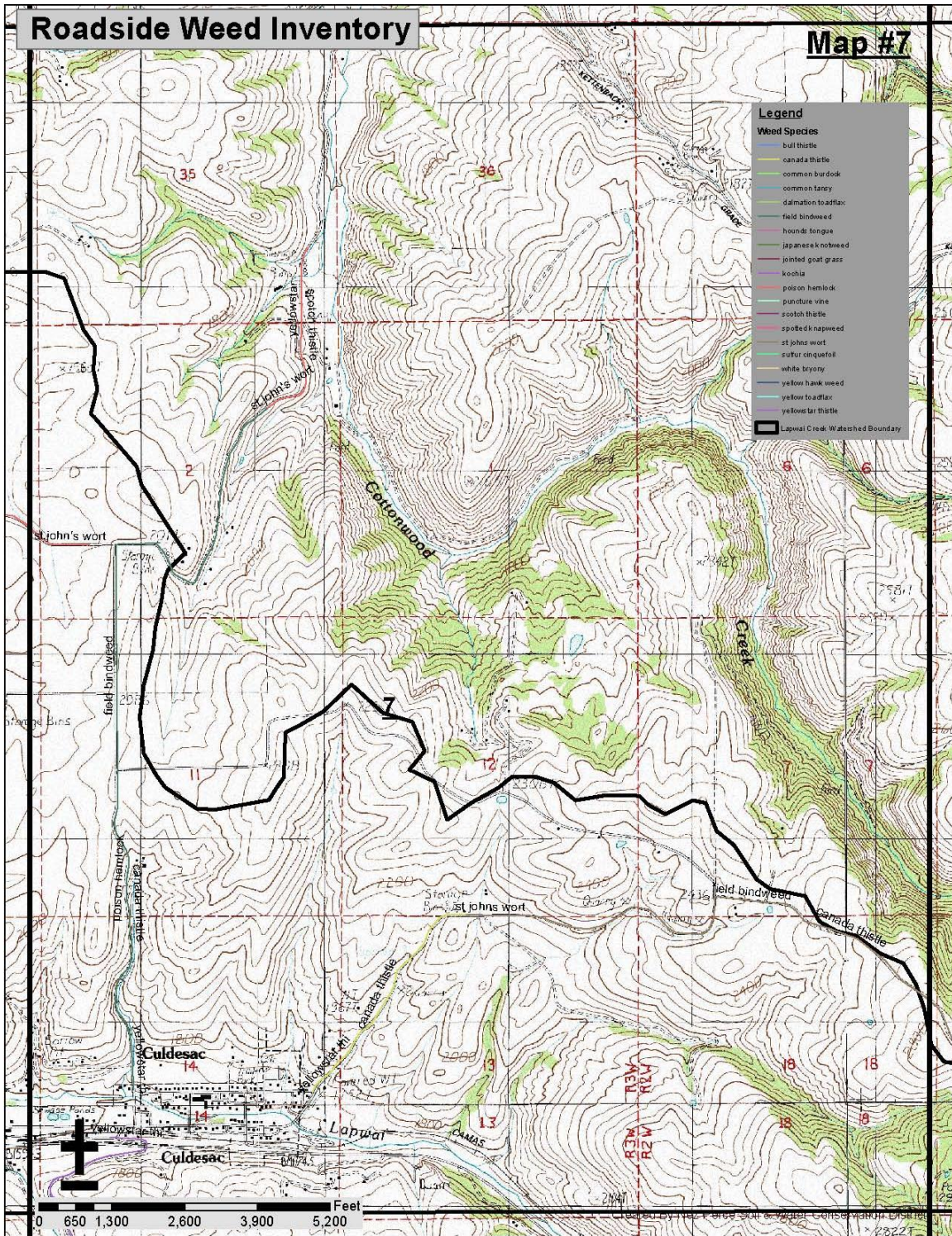


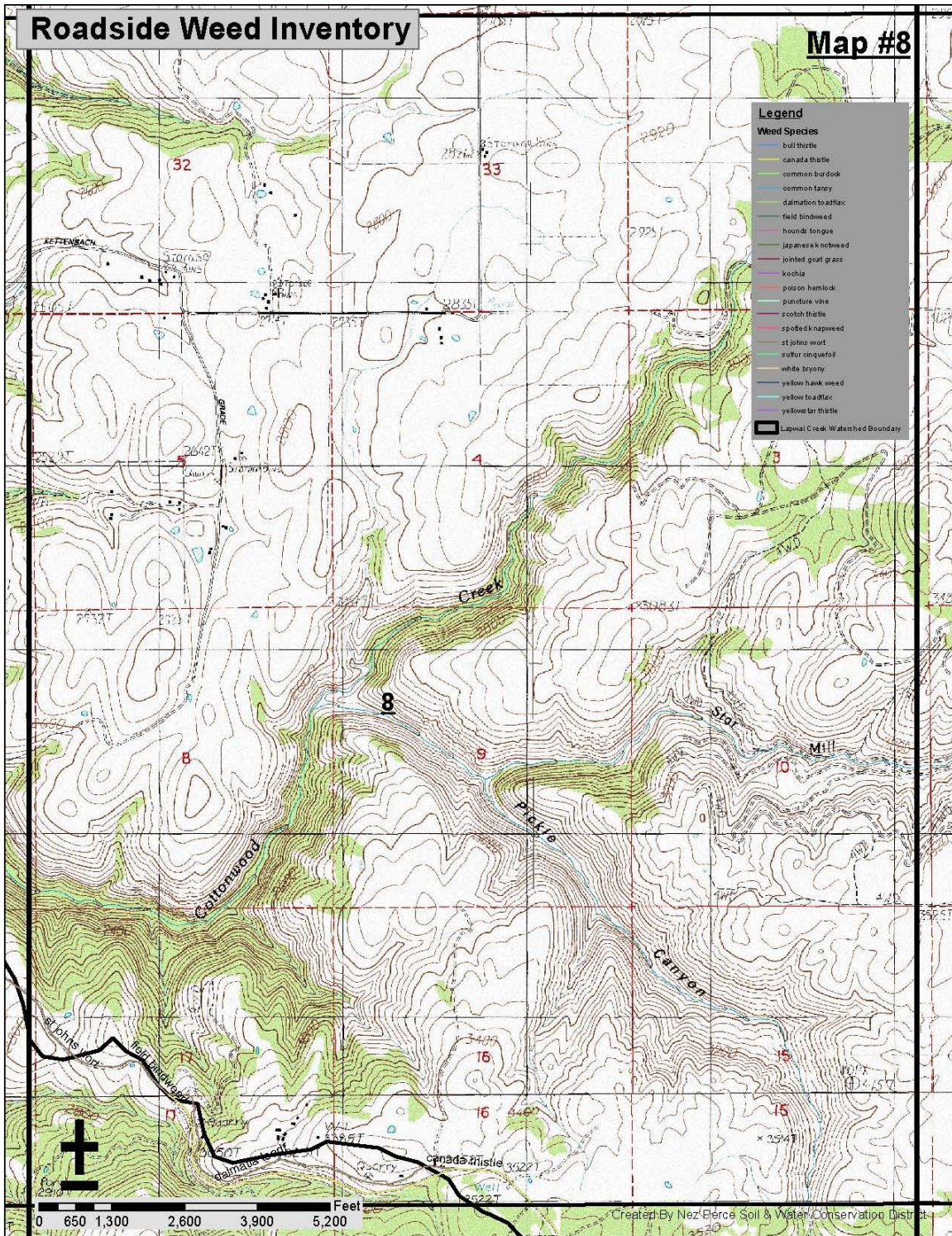




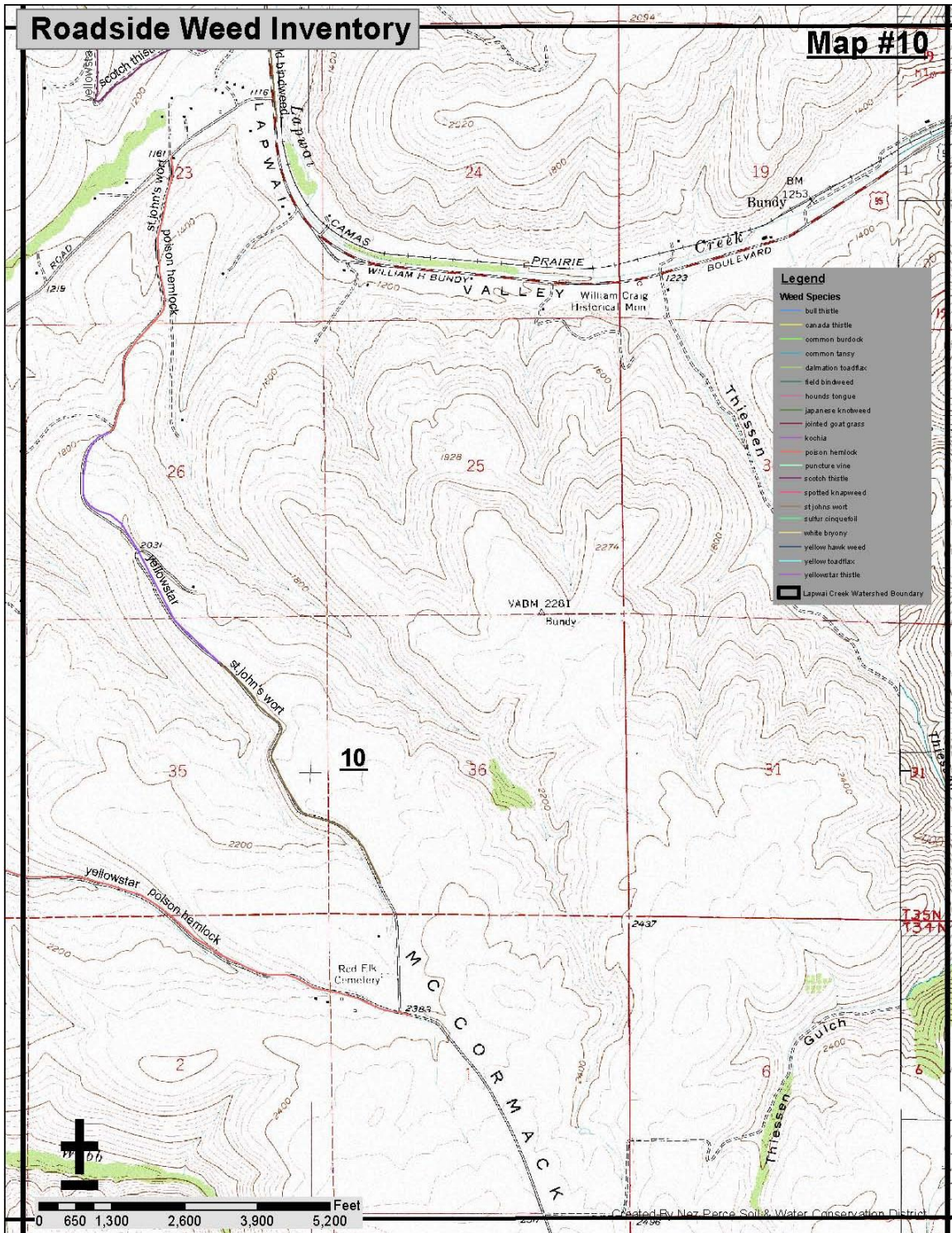


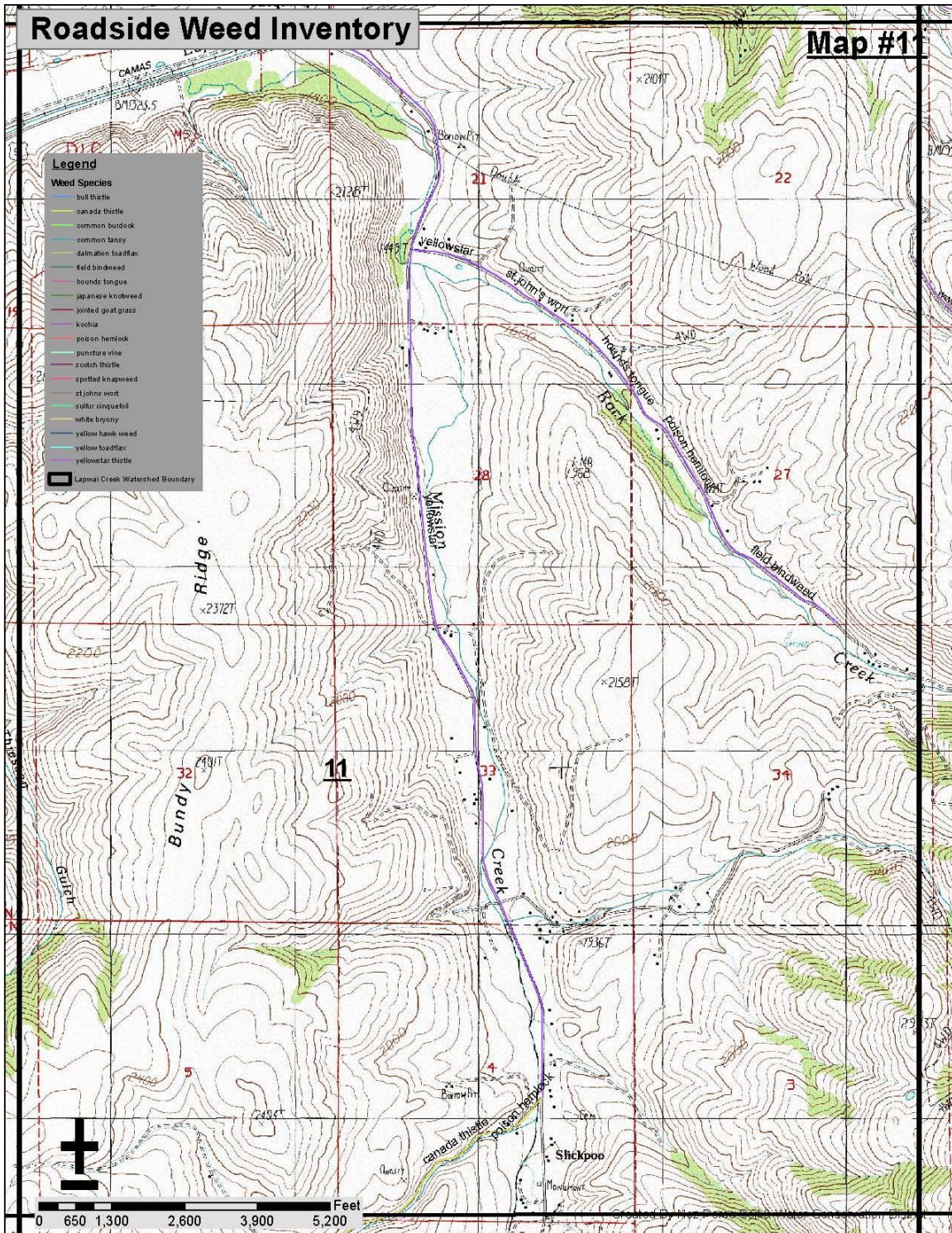


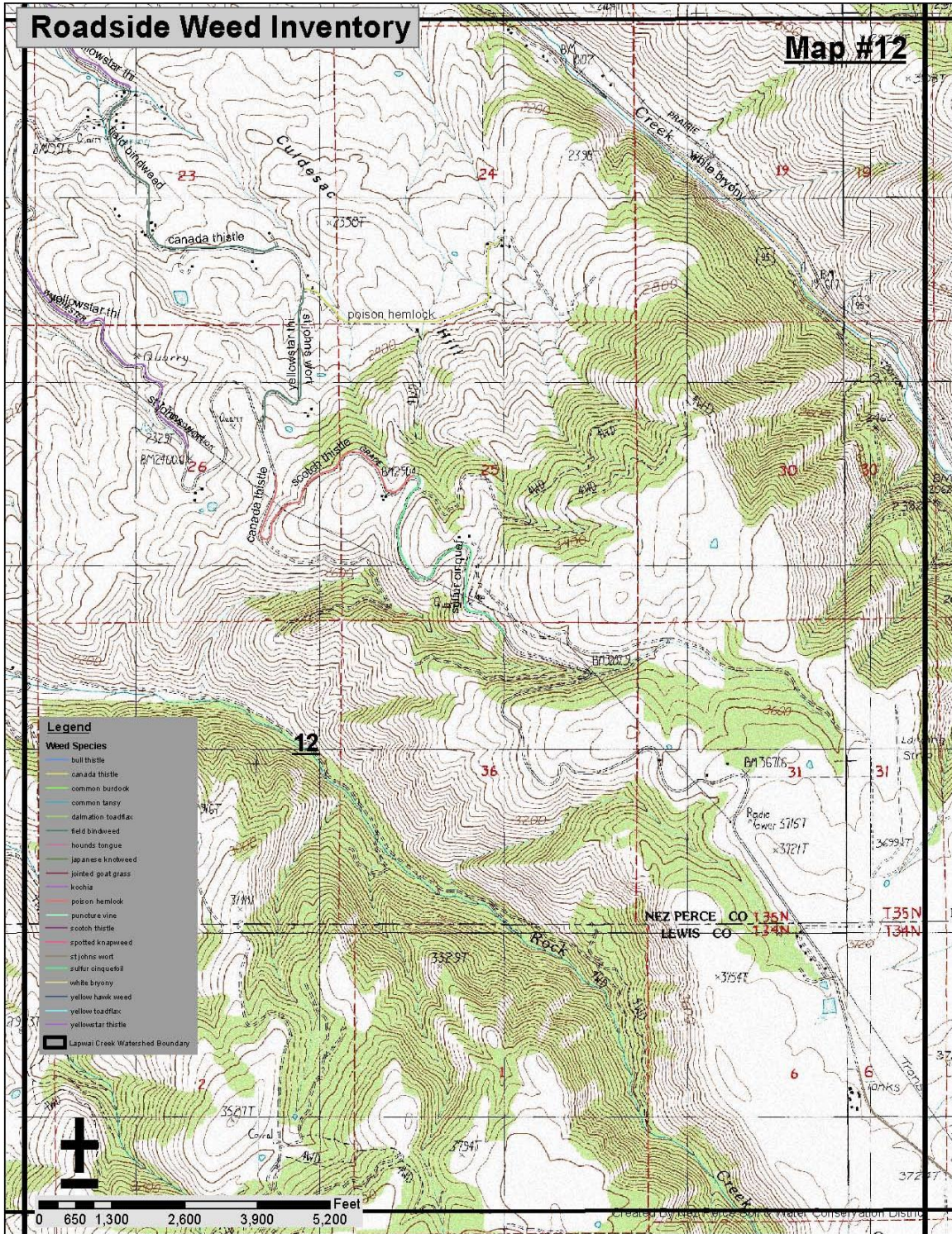




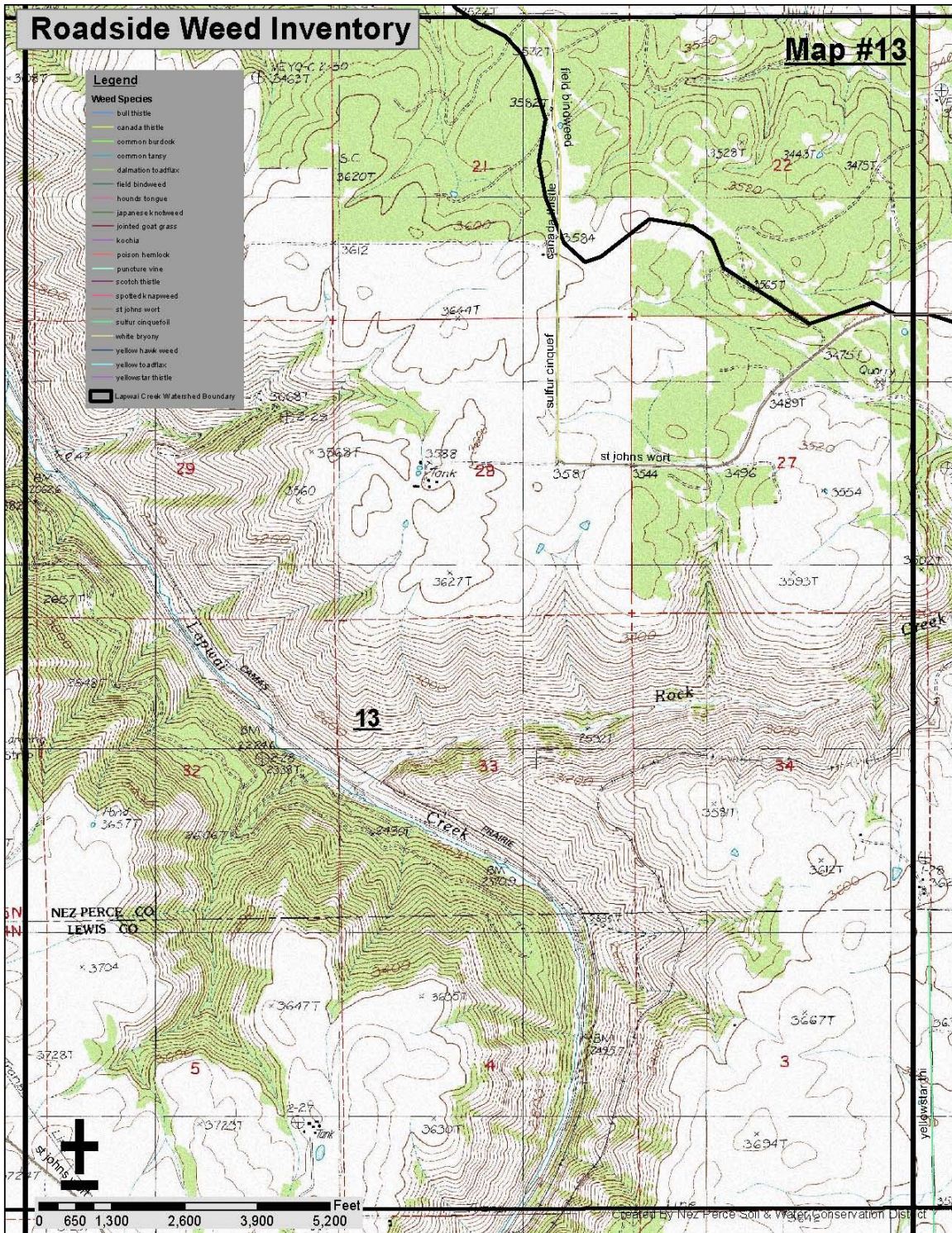
LAPWAI CREEK ROADSIDE WEED INVENTORY INDEX

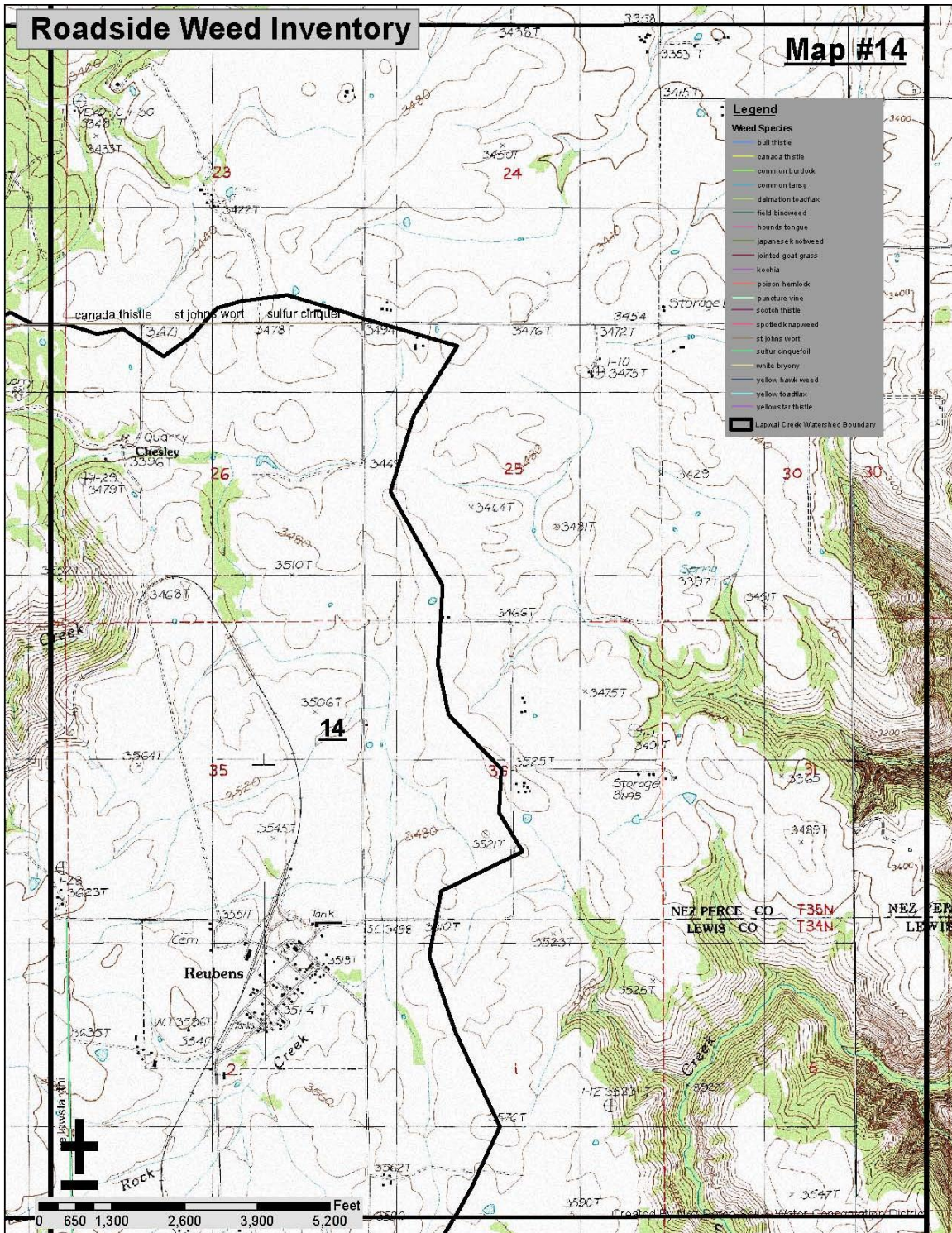


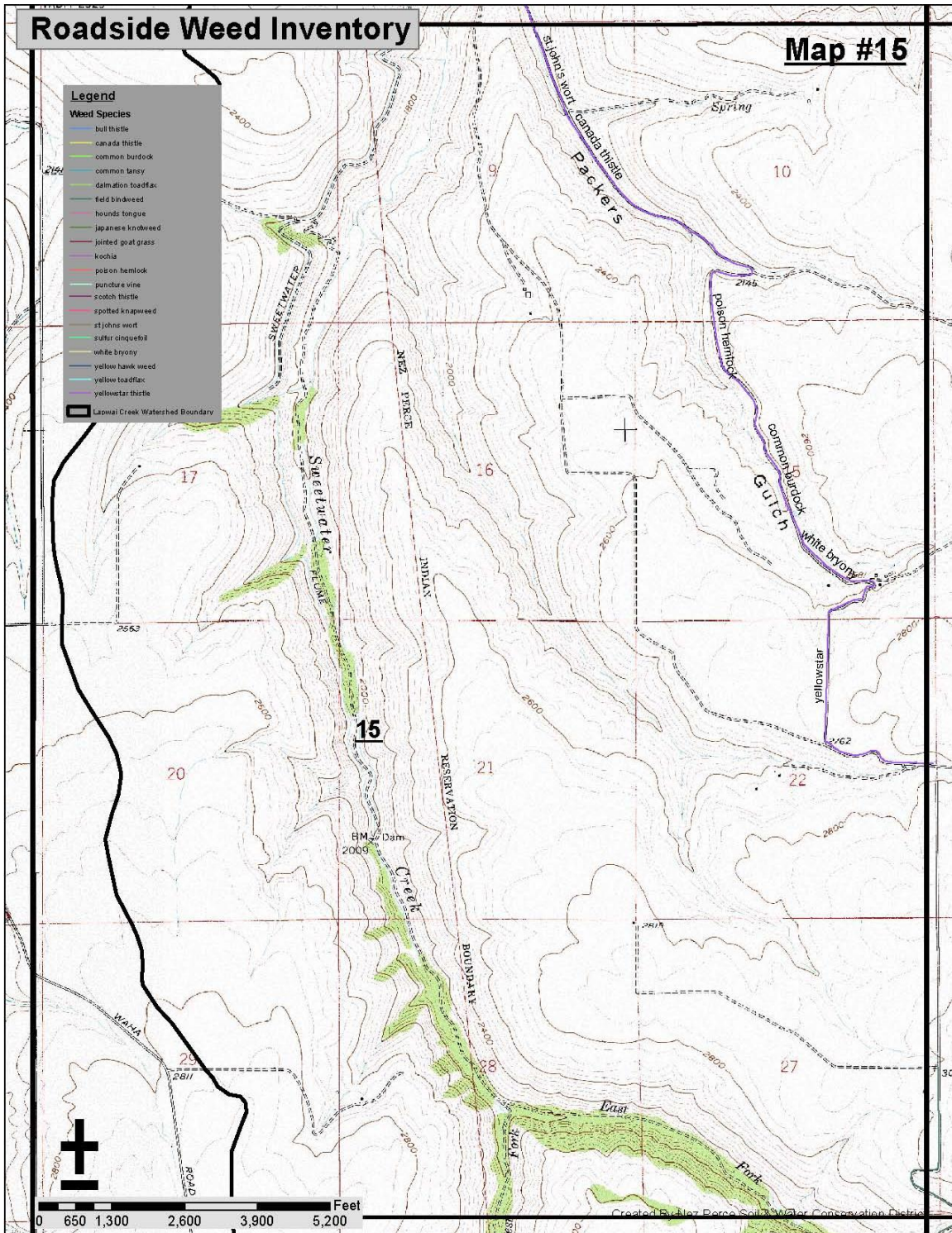


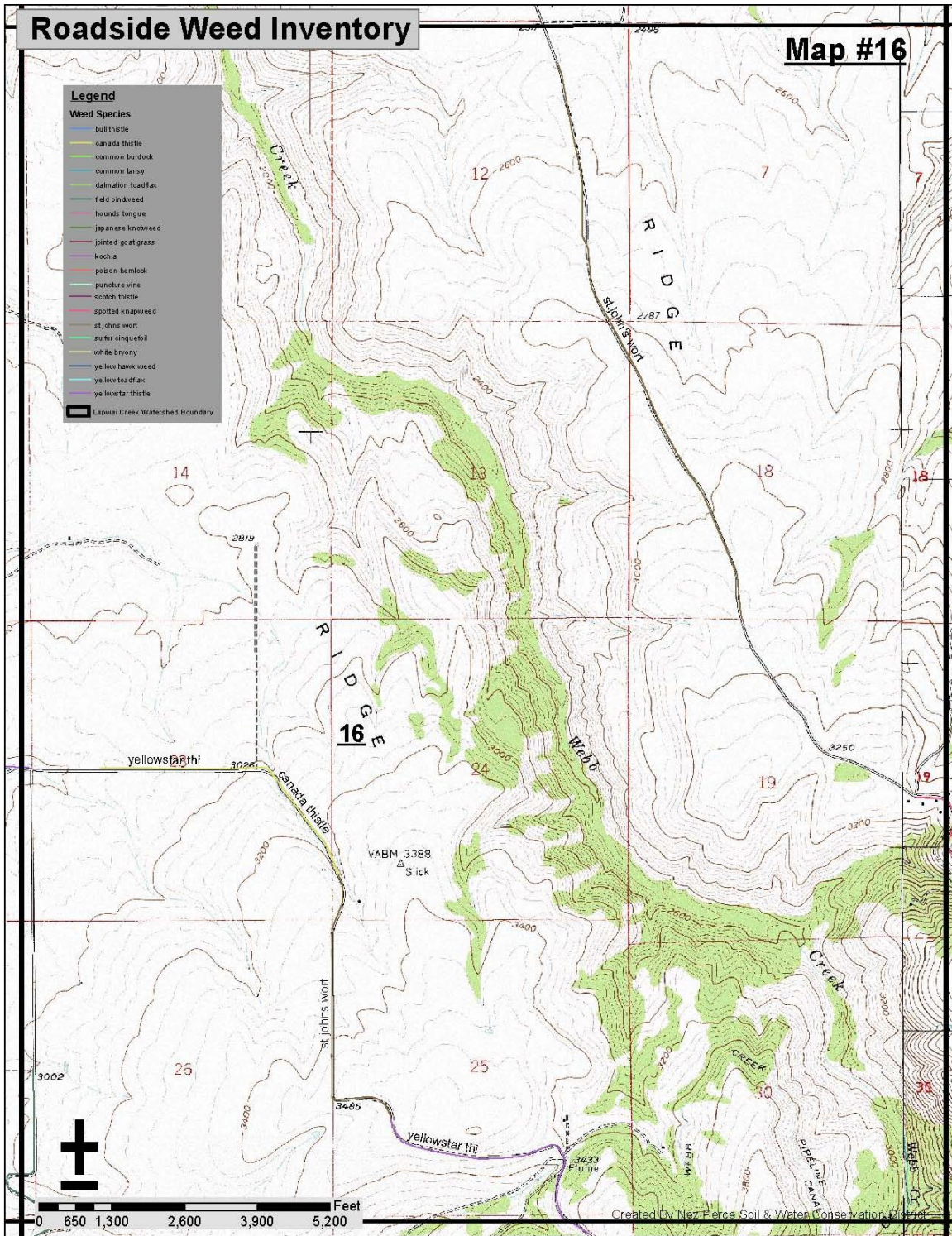


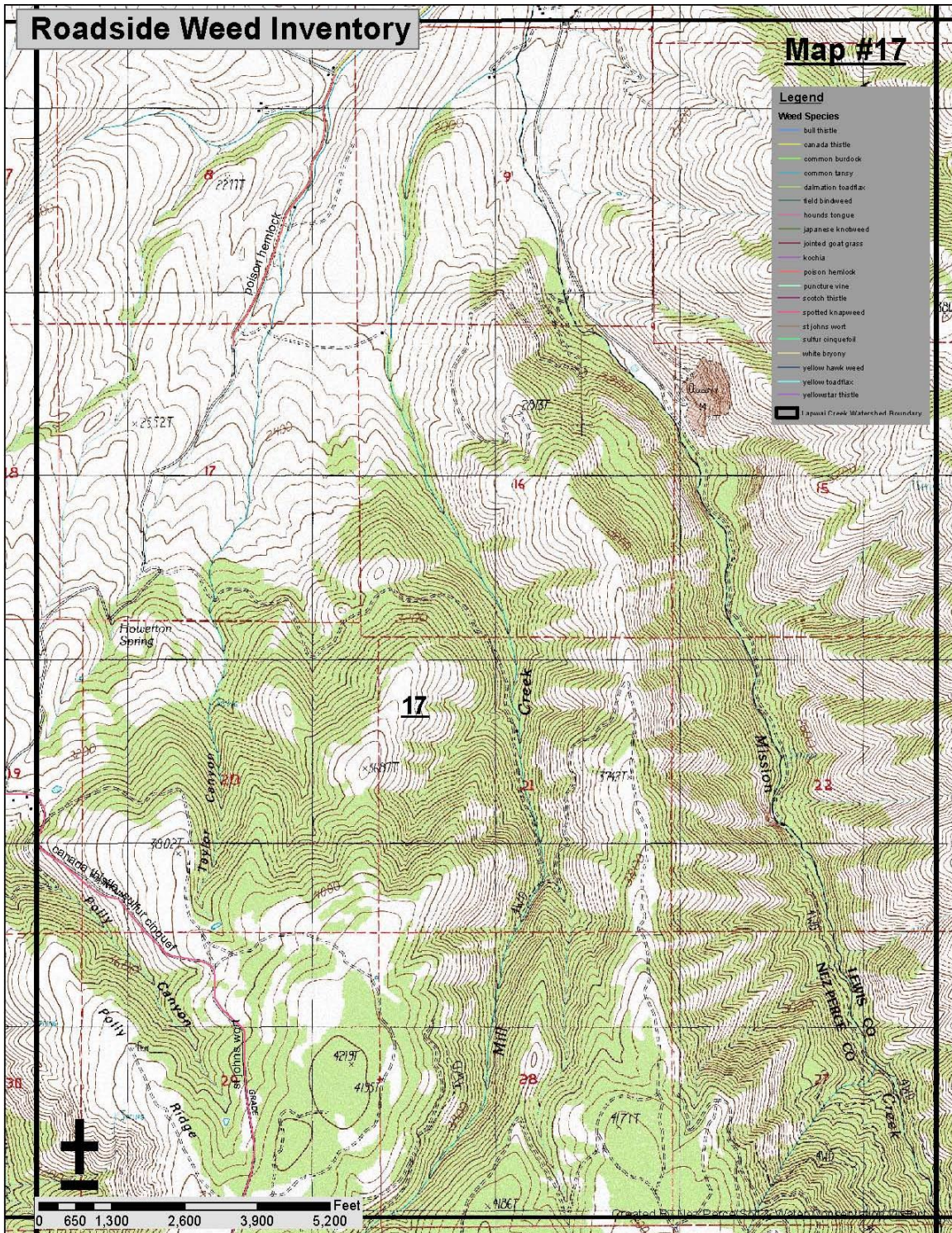
LAPWAI CREEK ROADSIDE WEED INVENTORY INDEX

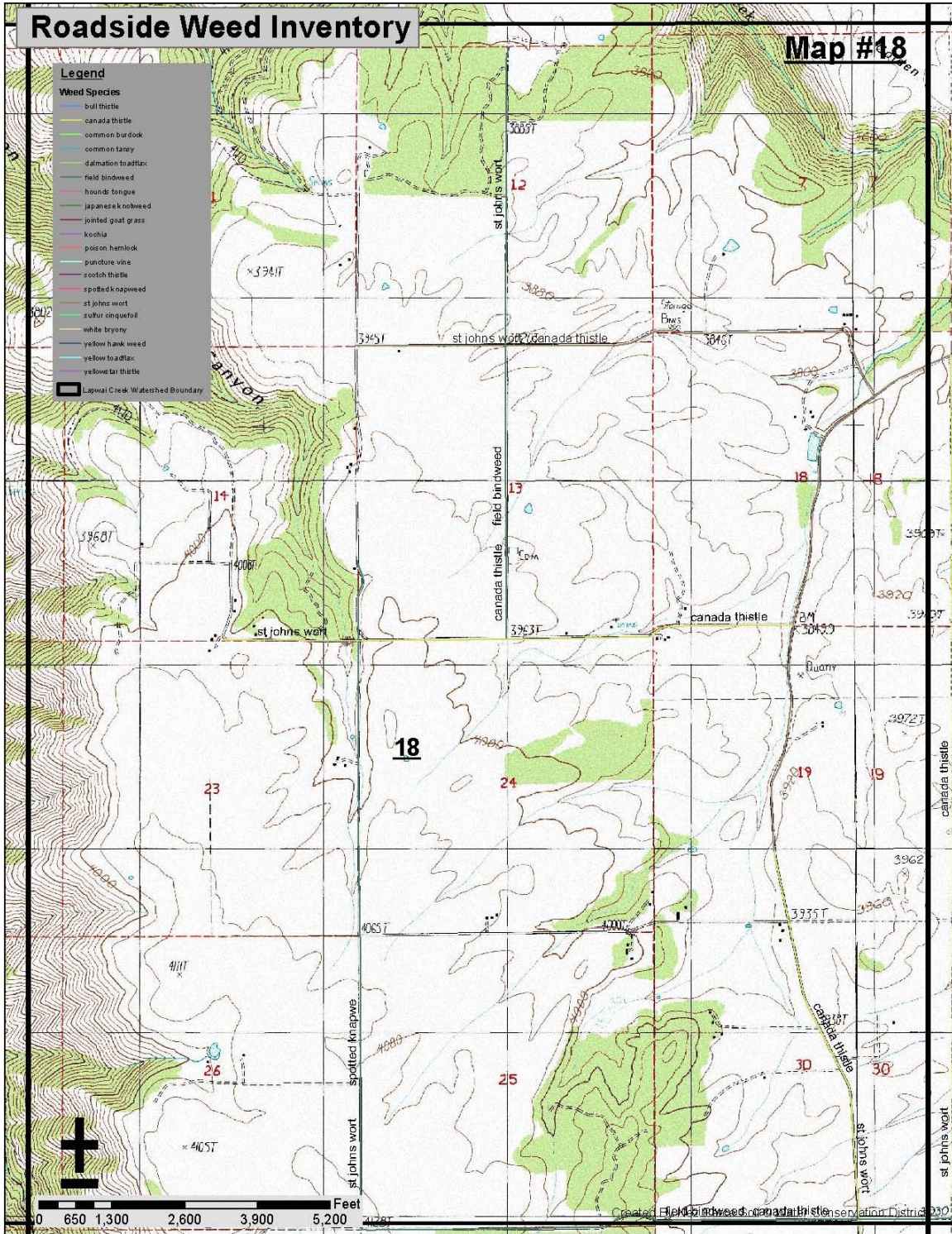




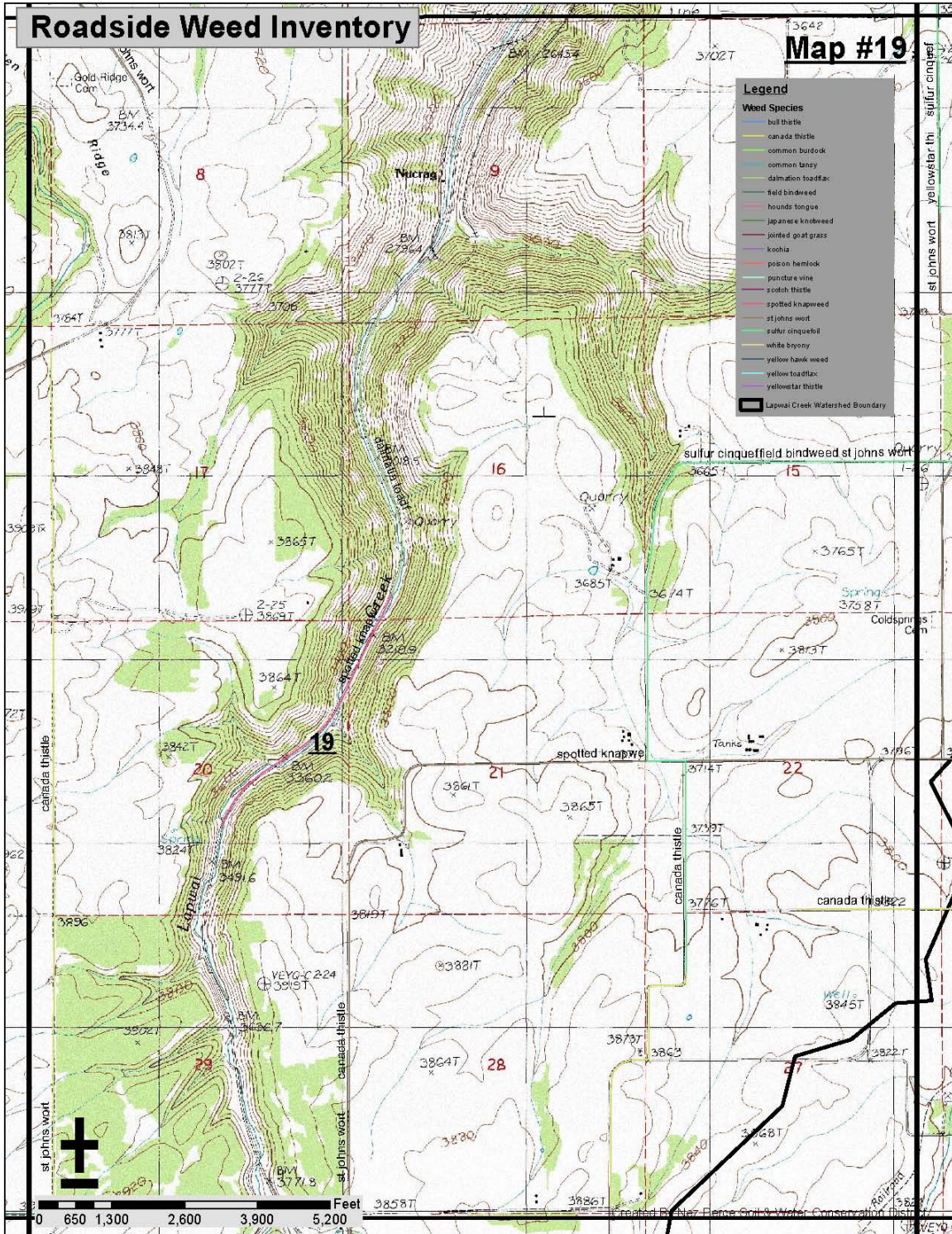


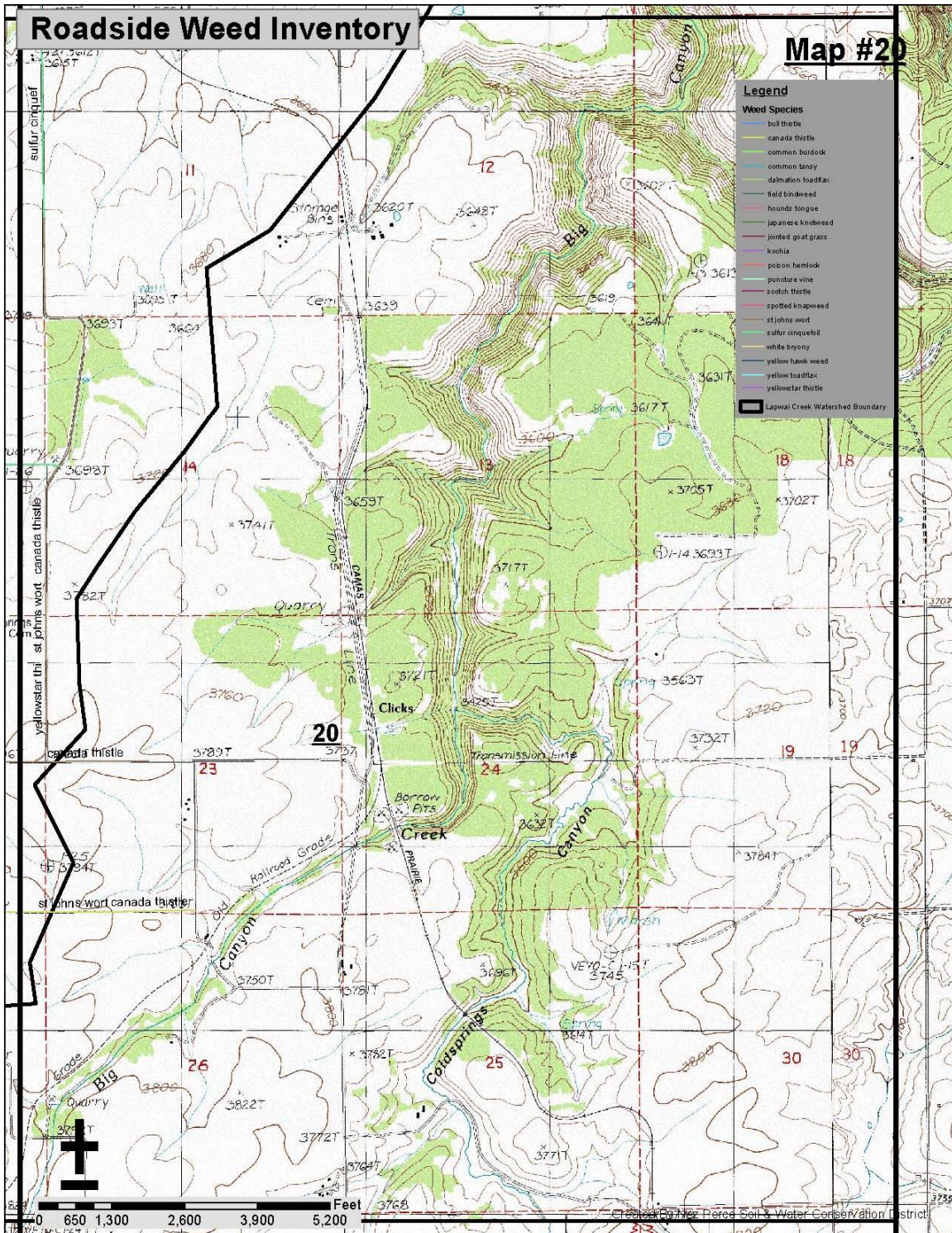


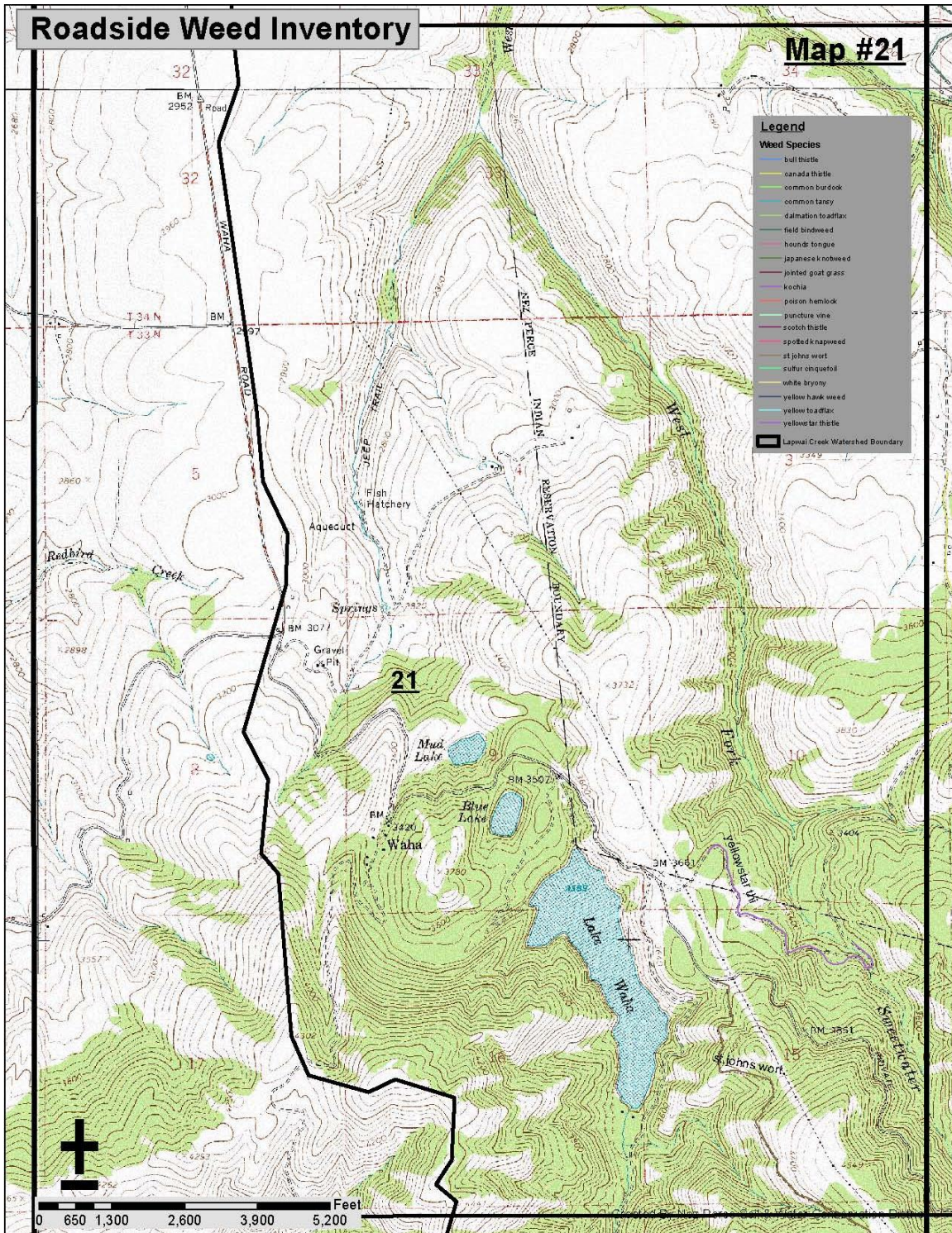


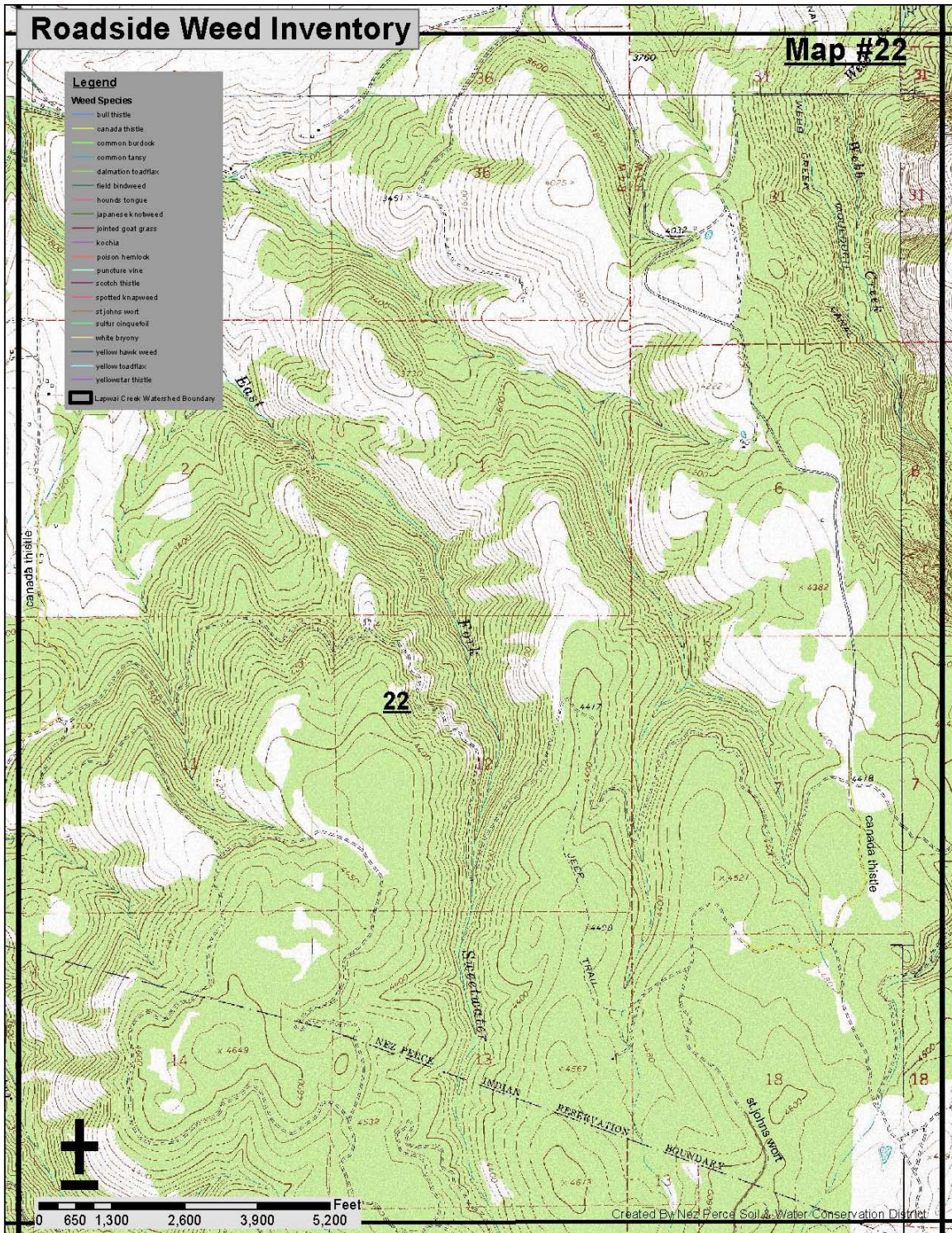


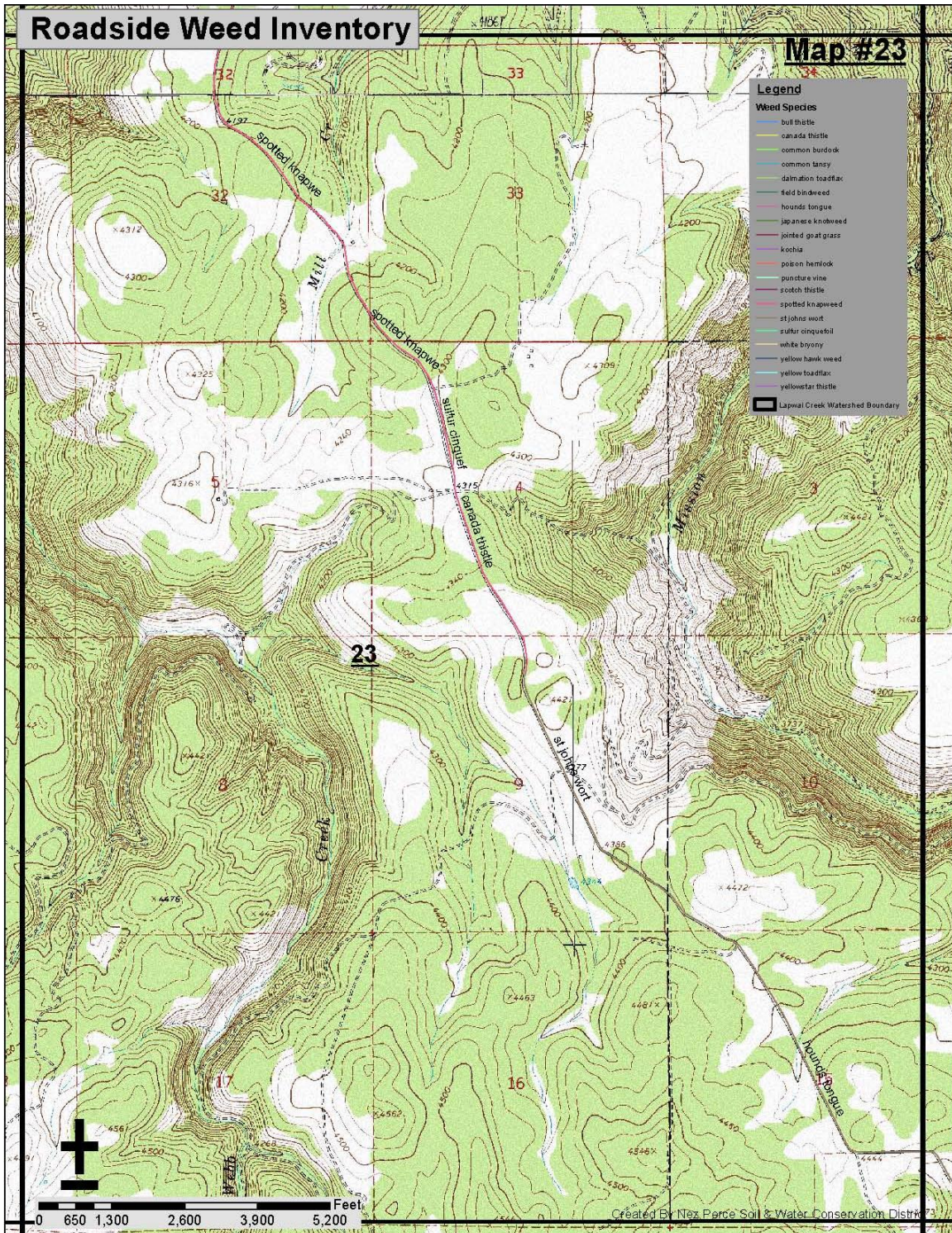
LAPWAI CREEK ROADSIDE WEED INVENTORY INDEX

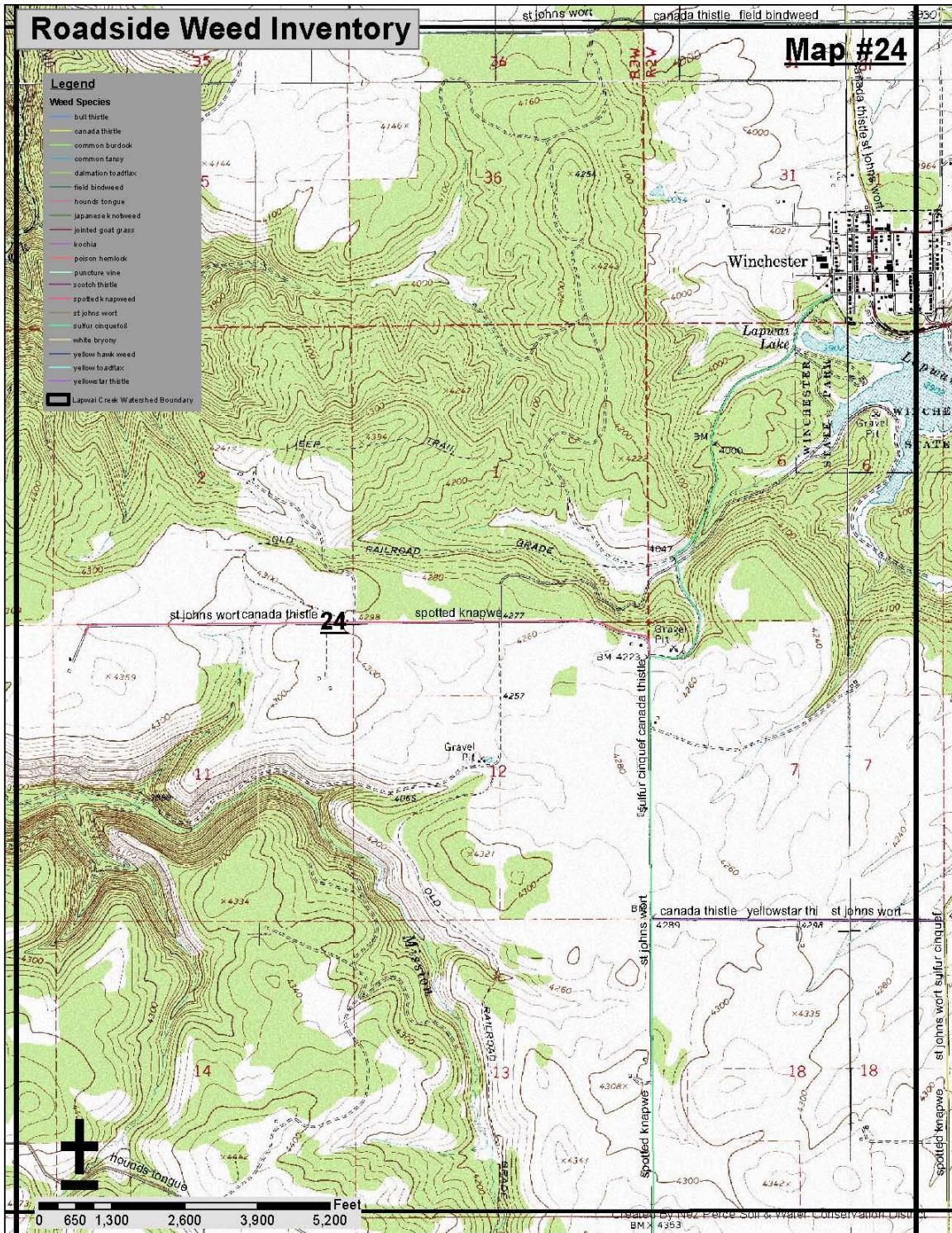




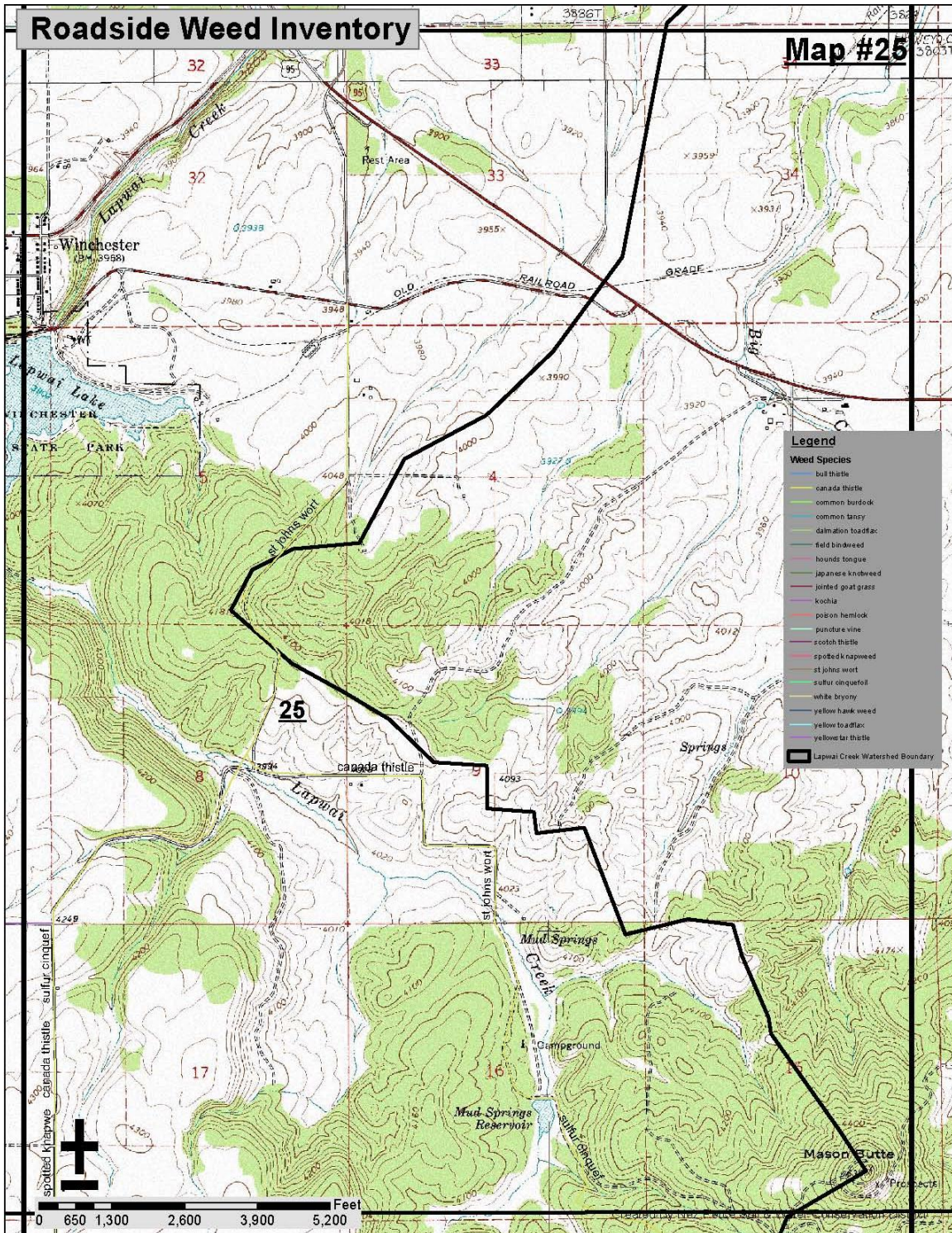


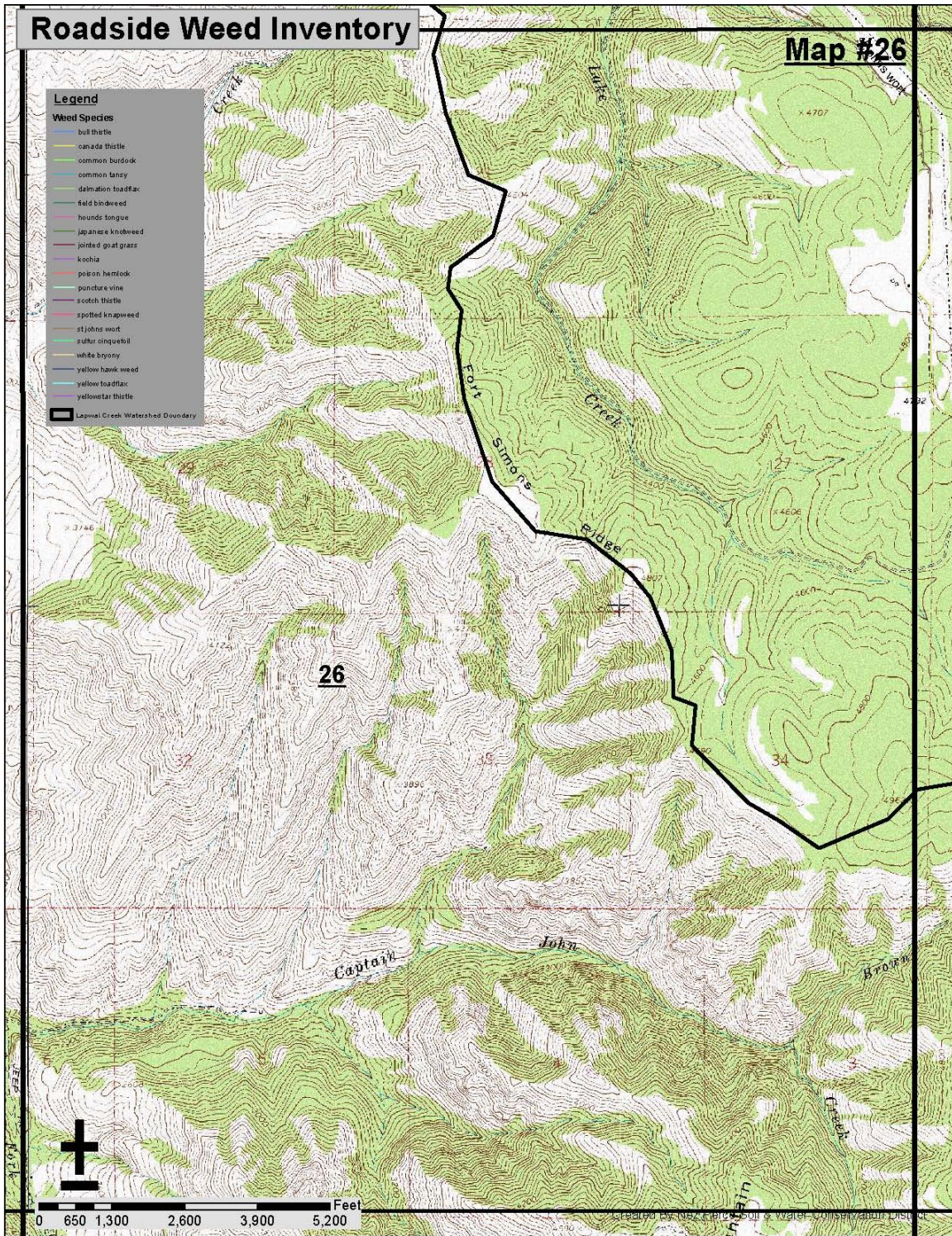


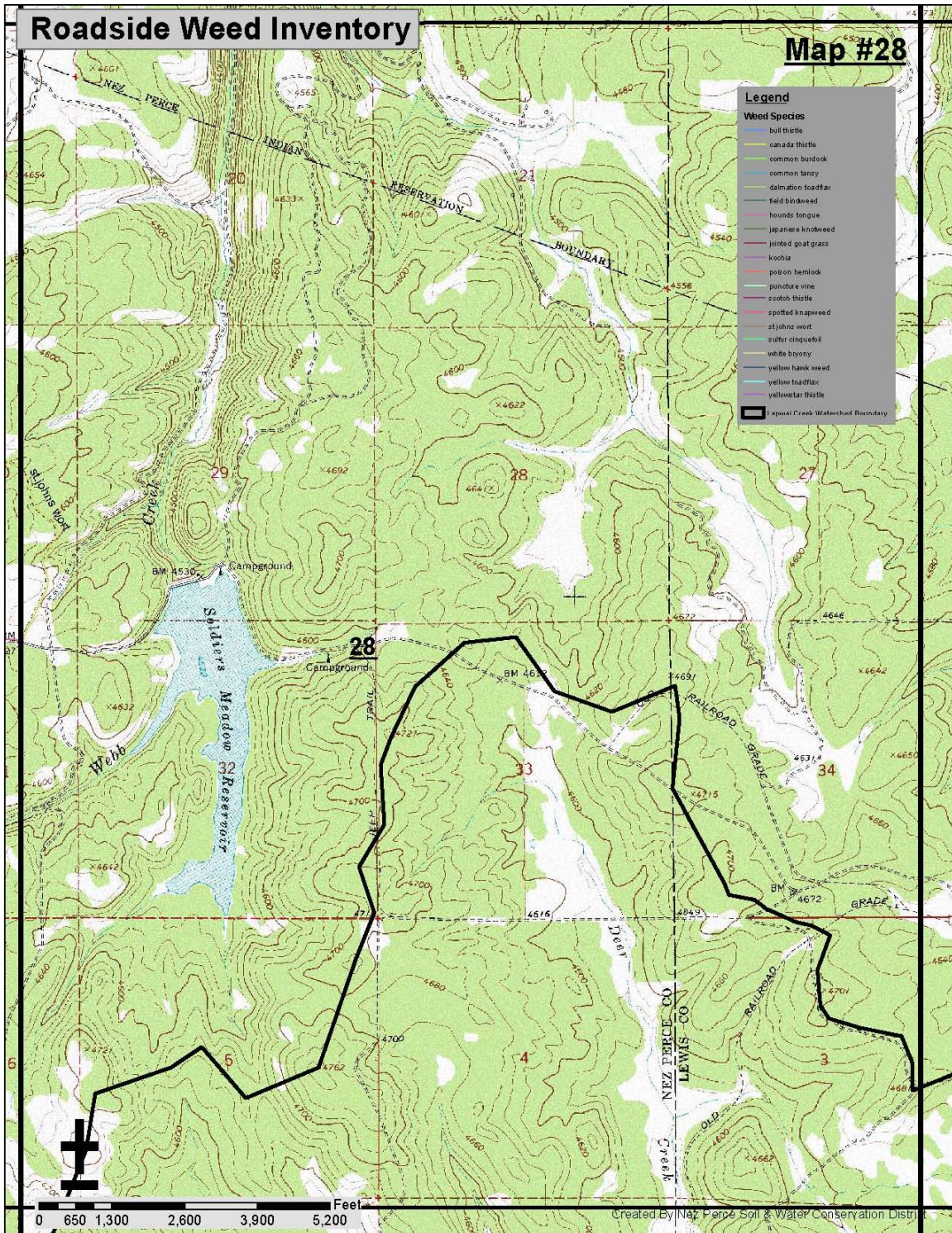


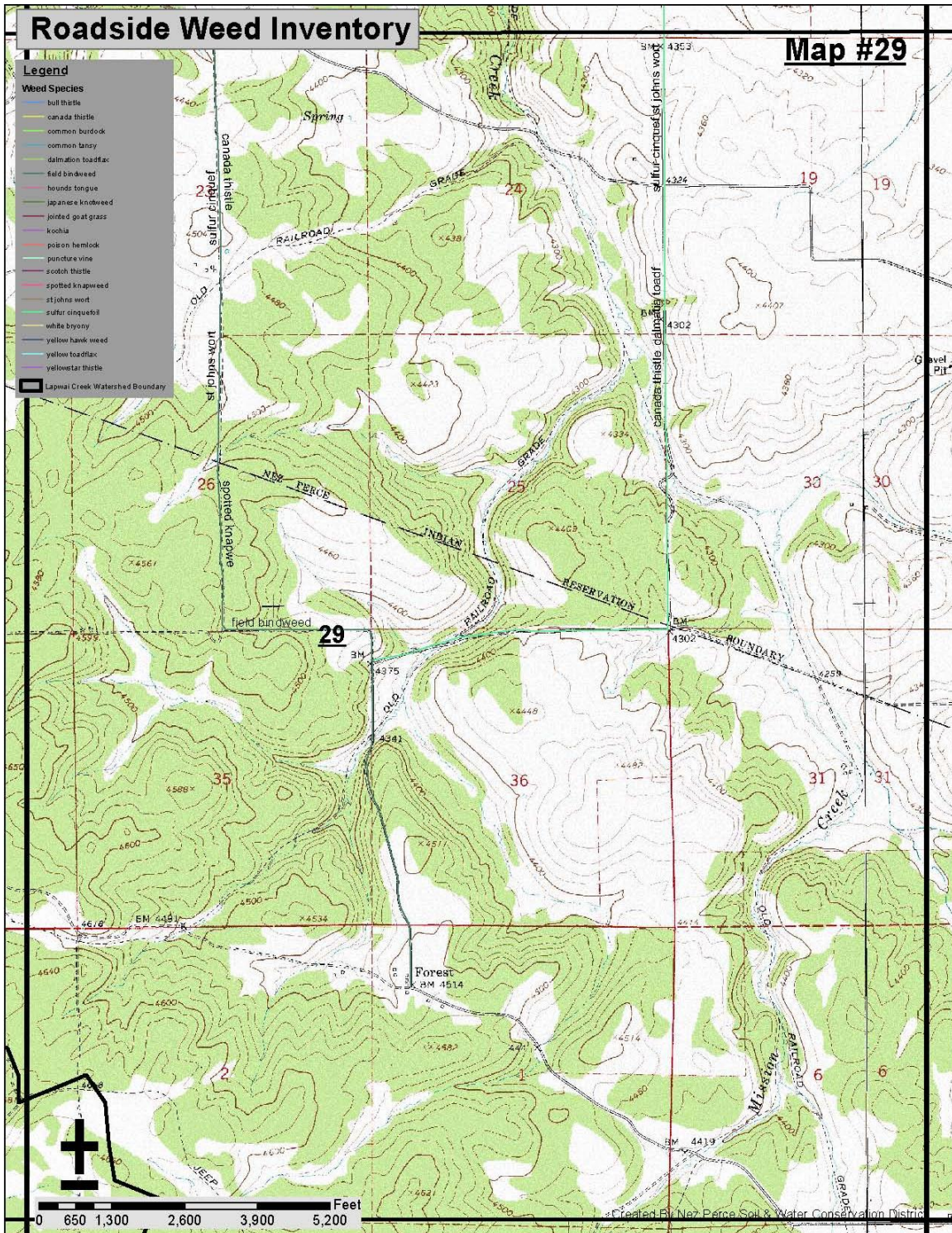


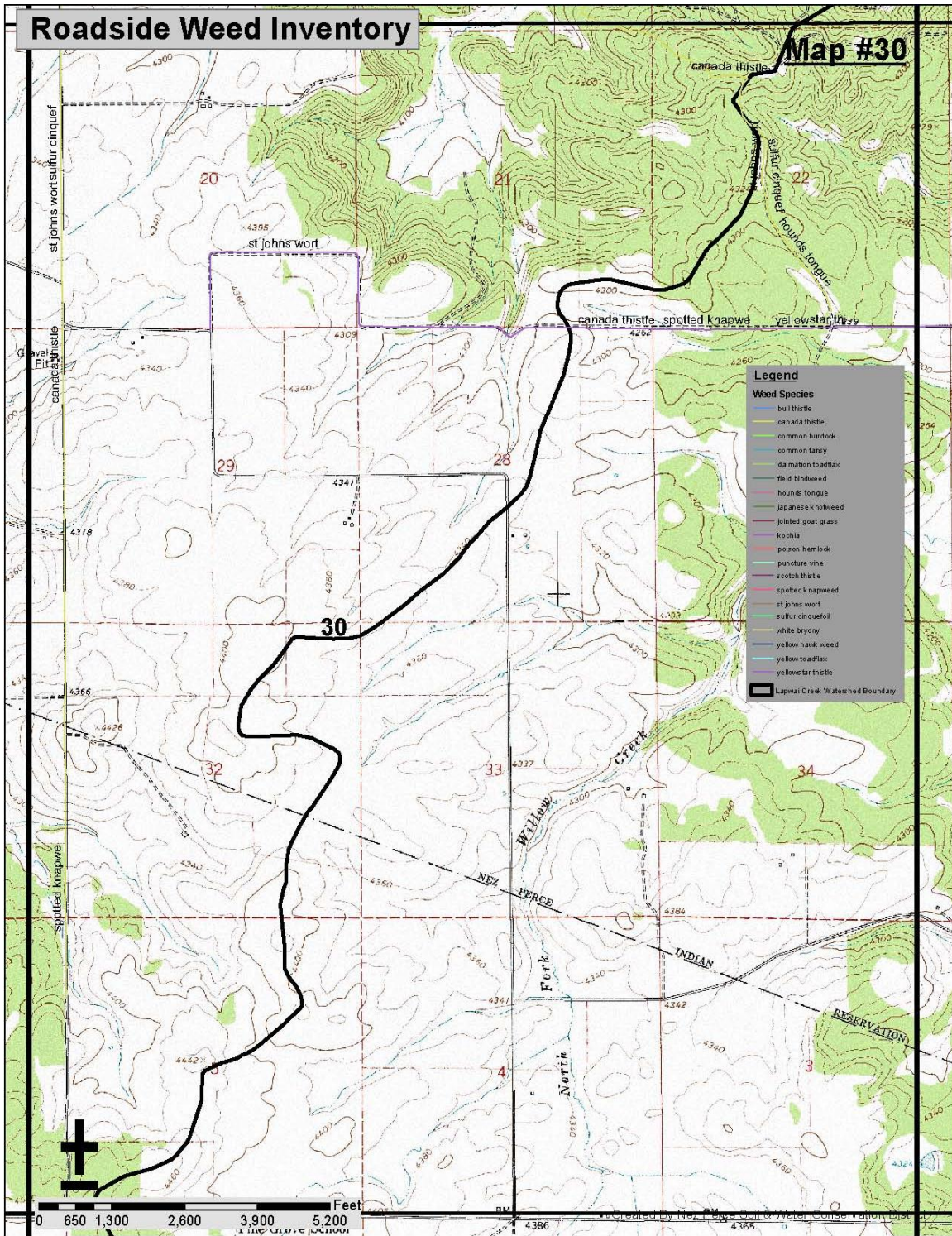
LAPWAI CREEK ROADSIDE WEED INVENTORY INDEX





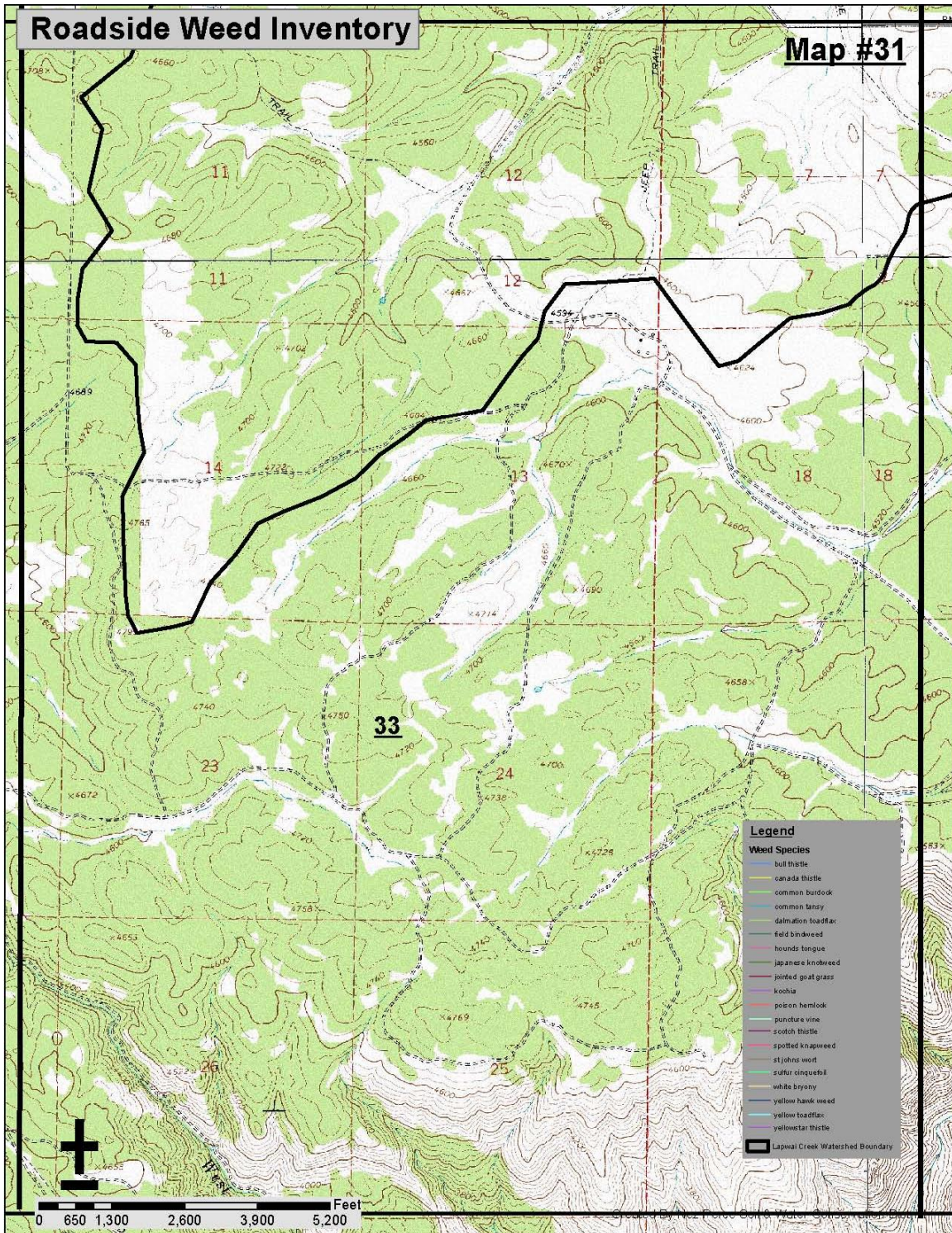








No applicable information for Map #32.



References

Clearwater Subbasin Assessment. Ecovista, Nez Perce Tribe Wildlife Division and Washington State University Center for Environmental Education. 2003. Accessed 30 September, 2007. www.nwcouncil.org/fw/subbasinplanning/clearwater/plan.

Idaho State Department of Agriculture Website.
<http://www.agri.state.id.us/Categories/PlantsInsects/NoxiousWeeds> Accessed August 2007.