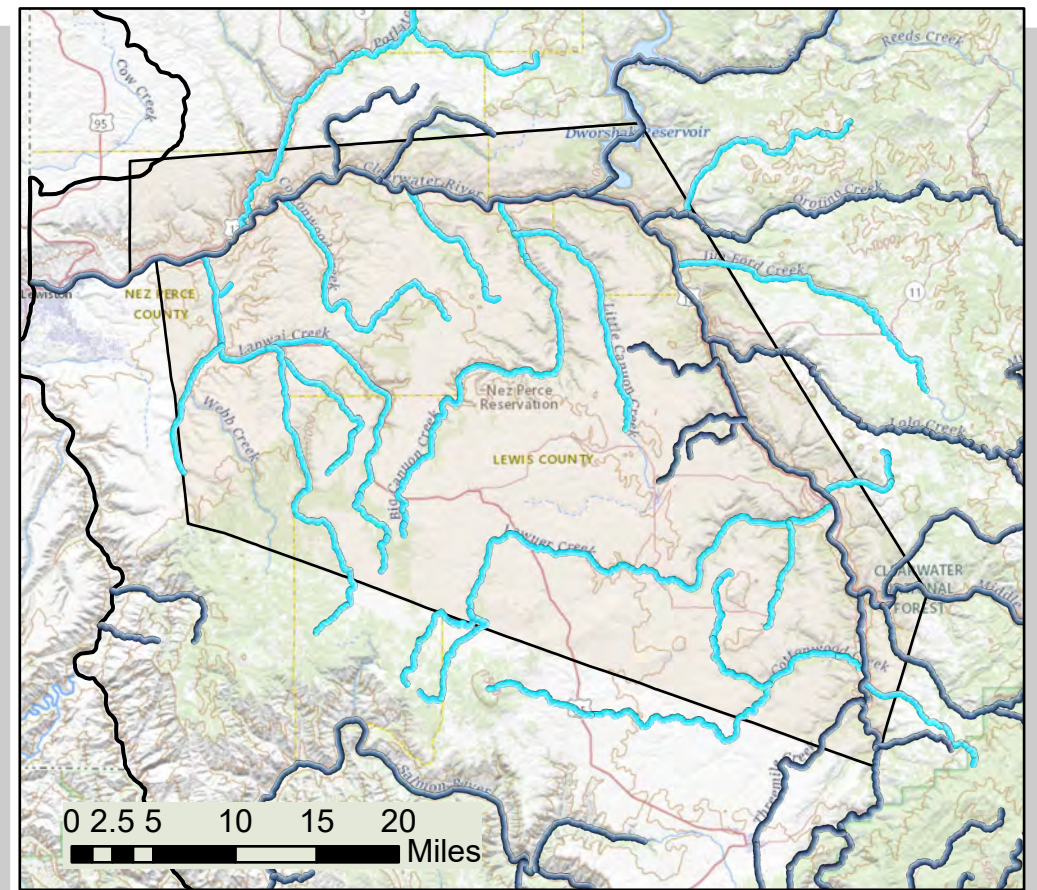
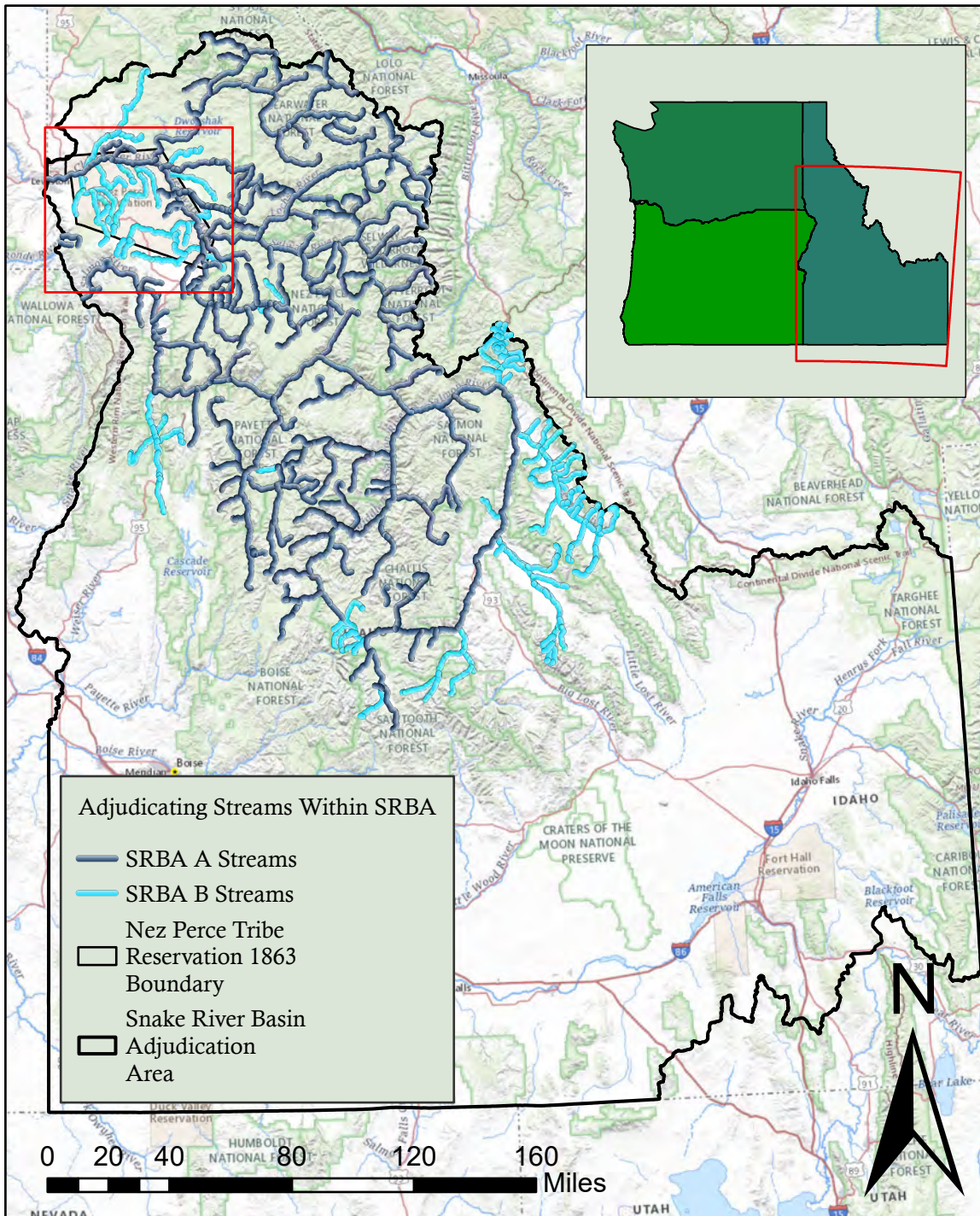


Snake River Basin Adjudication A and B Streams



The Snake River Basin Adjudication (SRBA) within Idaho has been an ongoing legal process since 1987. During this process, instream flows were decreed in the Salmon and Clearwater River basins to protect streamflow necessary to preserve cultural resources and support aquatic organisms, including ESA-listed salmon and steelhead. Instream flow streams were separated into two groups: A-list and B-list. A-list streams (shown in dark blue lines on the maps) flow through federal public lands and have minimal use by people. As such, minimum streamflows for the A-list streams were based on flow-dependent habitat modeling. The B-list streams (shown in light blue lines on the maps) flow through areas with substantial private ownership and have already been significantly developed to meet human water users' needs. As such, minimum streamflows for B-list streams were negotiated by consulting the local water users.