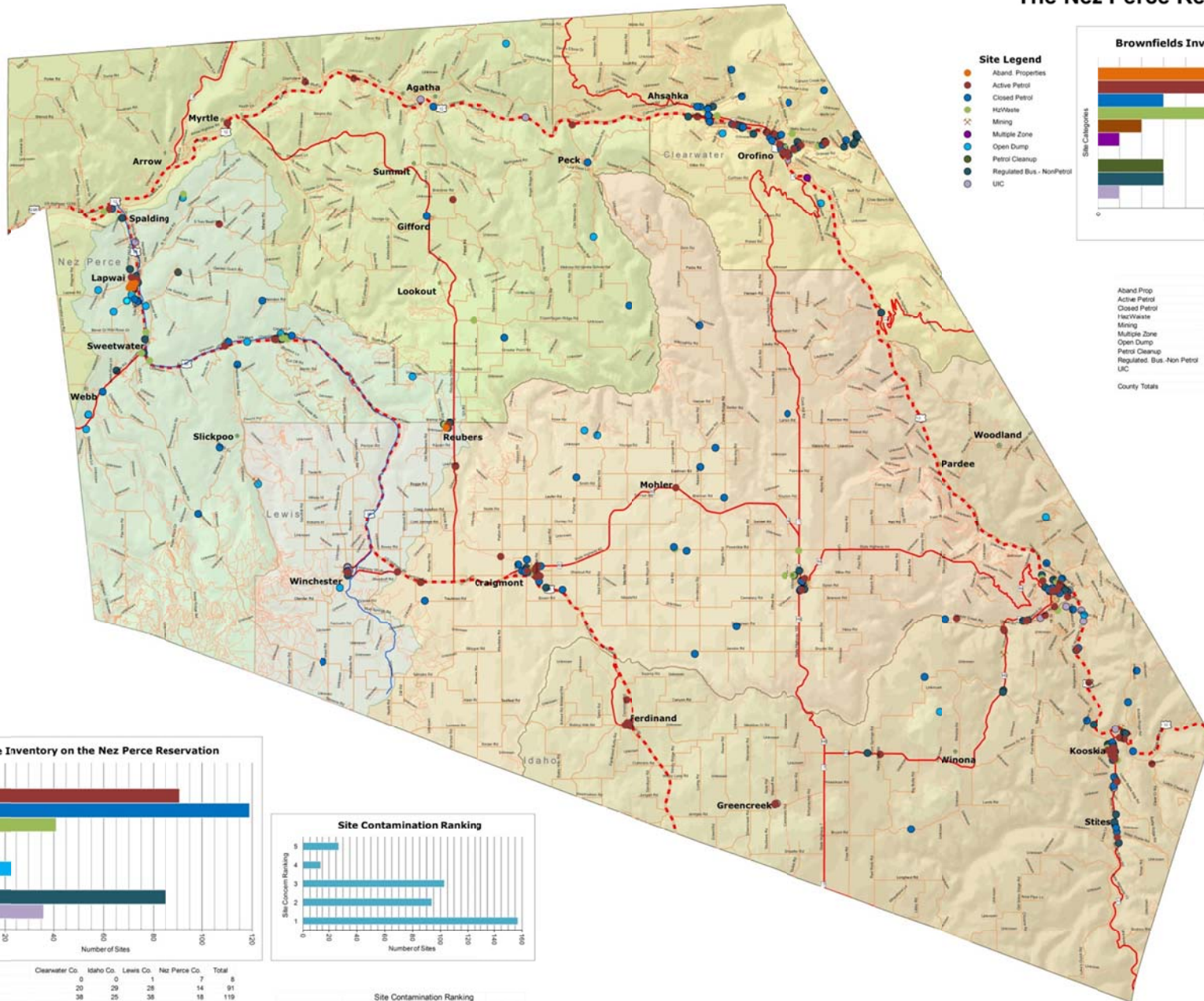


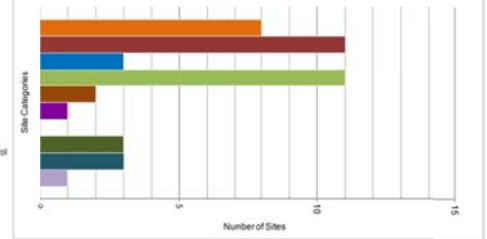
# Inventory of Regulated Properties and Brownfields on The Nez Perce Reservation



### Site Legend

- Aband. Properties
- Active Petrol
- Closed Petrol
- HazWaste
- Mining
- Multiple Zone
- Open Dump
- Petrol Cleanup
- Regulated Bus - Non Petrol
- UIC

### Brownfields Inventory on the Nez Perce Reservation



	Clearwater Co.	Idaho Co.	Lewis Co.	Nez Perce Co.	Total
Aband Prop	0	0	1	7	8
Active Petrol	0	5	4	2	11
Closed Petrol	0	2	1	0	3
HazWaste	2	1	6	3	11
Mining	0	1	1	0	2
Multiple Zone	1	0	0	0	1
Open Dump	0	0	0	0	0
Petrol Cleanup	0	2	1	0	3
Regulated Bus - Non Petrol	0	2	1	0	3
UIC	1	0	0	0	1
County Totals	4	13	14	12	43

### Map Legend

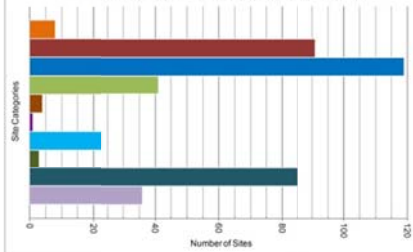
- Lapwai\_Creek
- Light Duty Road
- Primary Highway
- Secondary Highway
- POPULATION BY CITY
- 1 - 19
- 20 - 99
- 100 - 499
- 500 - 999
- 1000 - 2099
- Lapwai Creek Watershed
- Clearwater Co.
- Idaho Co.
- Lewis Co.
- Nez Perce Co.
- NPT Reservation Boundary



Map Purpose:  
To graphically depict the location of sites that are of concern or could impact ground or surface water on the Nez Perce Reservation

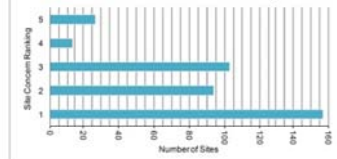
CREATED BY: WATER RESOURCES DIVISION, NPT  
DRAWN BY: J. GOODSON  
UPDATED: 03/11/14  
COORDINATE SYSTEM: NAD\_83\_UTM18N  
GCS: N. AMERICAN, 1883 TRANSVERSE MERCATOR  
DECLARATION: NO RE SUPPLIES  
DATUM: N. AMERICA, 1883

### Site Inventory on the Nez Perce Reservation



	Clearwater Co.	Idaho Co.	Lewis Co.	Nez Perce Co.	Total
Aband Prop	0	0	1	7	8
Active Petrol	20	29	28	14	91
Closed Petrol	38	25	38	18	119
HazWaste	8	6	16	11	41
Mining	0	2	1	1	4
Multiple Zone	1	0	0	0	1
Open Dump	2	3	4	14	23
Petrol Cleanup	0	2	1	0	3
Regulated Bus - Non Petrol	21	23	28	13	85
UIC	4	12	12	8	36
County Totals	94	102	129	86	411

### Site Contamination Ranking



County	Site Contamination Ranking					Total
	1	2	3	4	5	
Clearwater Co.	45	15	23	5	5	93
Idaho Co.	51	17	22	3	7	100
Lewis Co.	37	43	32	3	10	125
Nez Perce Co.	24	19	26	2	5	76
Total	157	94	103	13	27	394

- 5 = Known Contamination
- 4 = Likely Contamination
- 3 = Recognized Environmental Concerns That Frequently Cause Contamination
- 2 = Site History is Unknown
- 1 = No Further Action, Closed Site or Low Probability to Cause Contamination